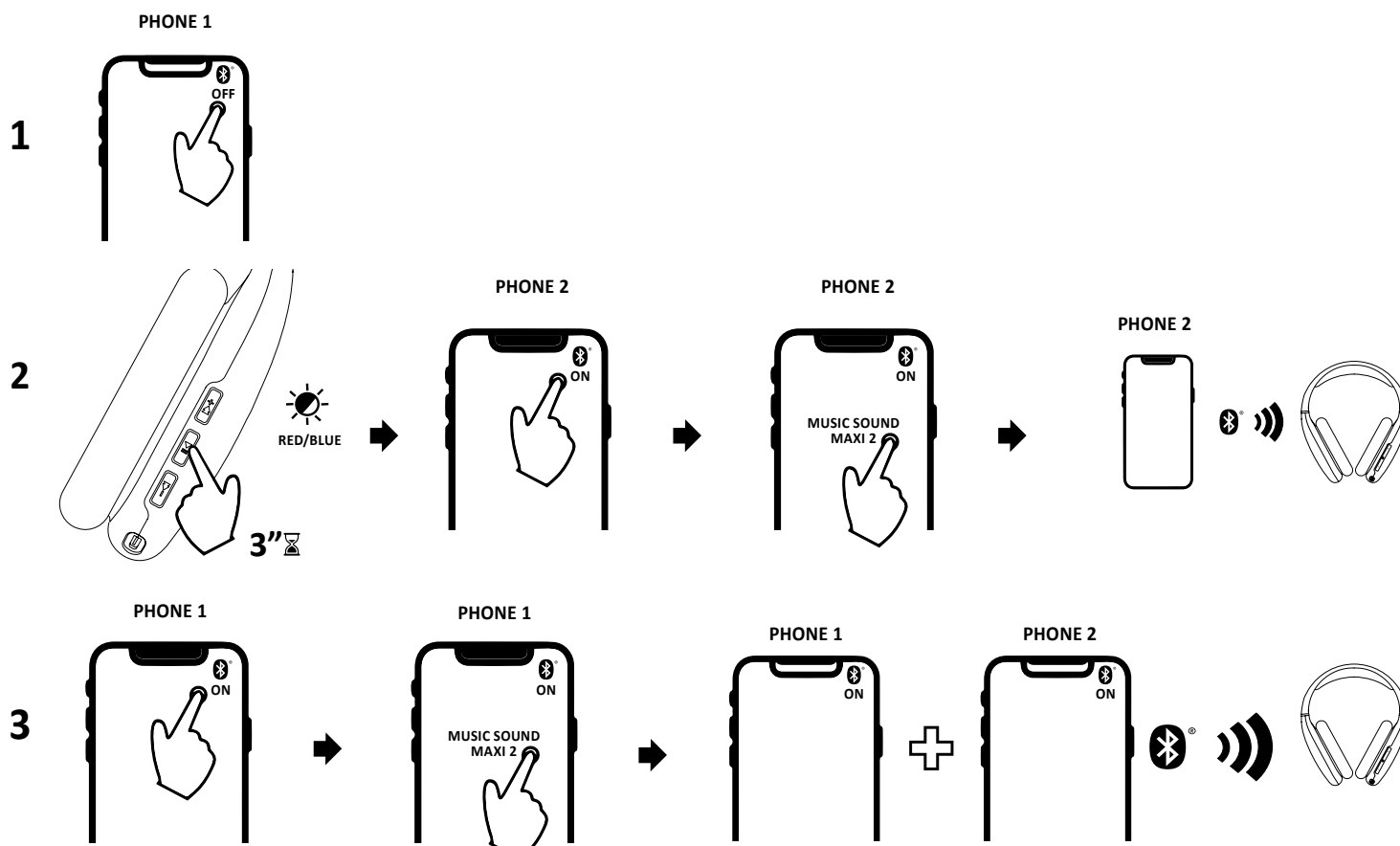
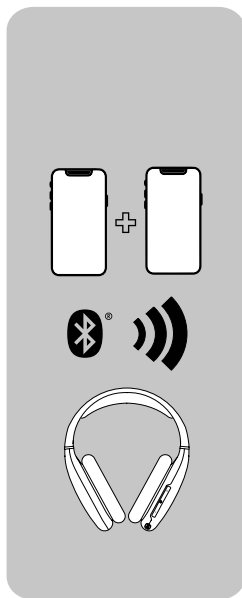
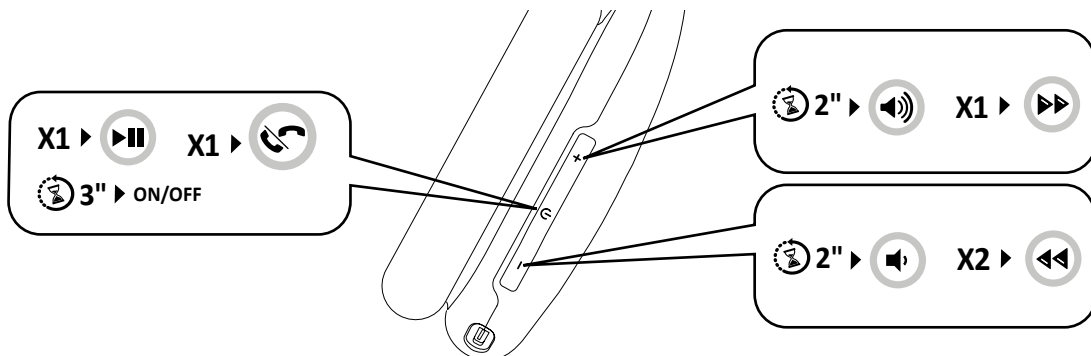
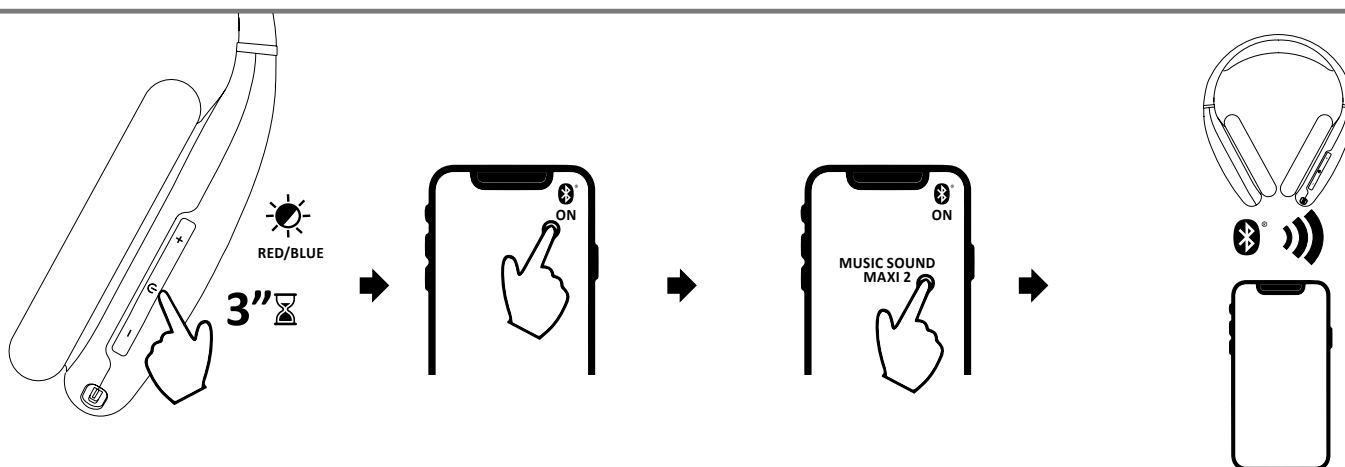
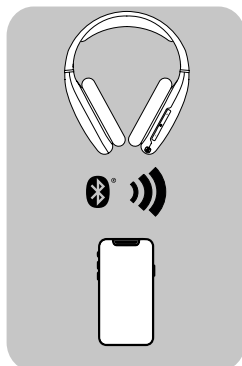
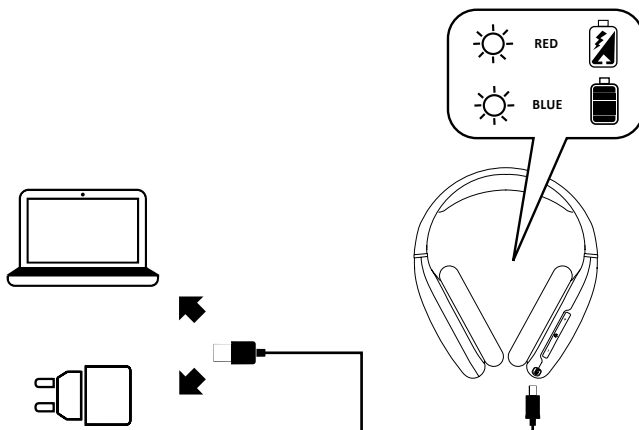
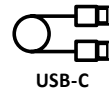
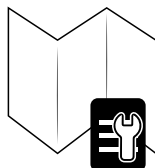
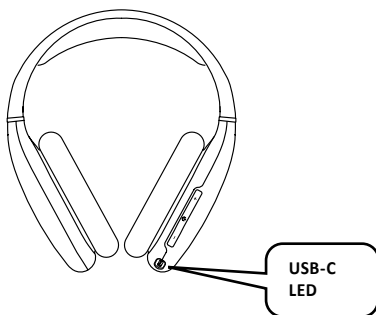


# MAXI 2

BTHEADBMSMAXI2K  
BTHEADBMSMAXI2W  
BTHEADBMSMAXI2R  
BTHEADBMSMAXI2B  
BTHEADBMSMAXI2V  
BTHEADBMSMAXI2G



**EN**  
**Technical specifications:**  
Bluetooth®: v5  
Supported profiles: Headset – Handsfree – A2DP – AVRCP  
Range: 10m  
Bluetooth® Frequency Range: 2402MHz-2480MHz  
Battery Voltage: 3.7V  
Battery Capacity: 300mAh  
USB-C port Voltage (V): 5V  
USB-C port Current (A): 1A  
ERP: 4dBm  
Output Power: 0.024W (in BT mode)  
Talk Time: approx. 16 hours  
Play Time: approx. 16 hours  
Charging the headphones: About 2 hours  
Weight: 185g

**IT**  
**Specifiche tecniche:**  
Bluetooth®: v5.0  
Profilii supportati: Headset – Handsfree – A2DP – AVRCP  
Portata: 10mt  
Bluetooth Frequency Range: 2.402GHz-2.480GHz  
Battery Voltage: 3.7V  
Battery Capacity: 300mAh  
USB-C port Voltage (V): 5V  
USB-C port current (A): 1A  
ERP: 4dBm  
Output Power: 0.024W (in BT mode)  
Talk Time: 16 ore circa  
Play Time: 16 ore circa  
Ricarica auricolari: 2 ore circa  
Peso: 185 g

**FR**  
**Spécifications techniques:**  
Bluetooth®: version 5  
Profils supportés: Casque - Mains libres - A2DP - AVRCP  
Portée: 10 m  
Gamme de fréquences Bluetooth®: 2 402 MHz - 2 480 MHz  
Tension de la batterie: 3,7 V  
Capacité de la batterie: 300 mAh  
Tension du port USB-C (V): 5 V  
Courant du port USB-C (A): 1 A  
PAR: 4 dBm  
Puissance en sortie: 0,024W (in BT mode)  
Autonomie en conversation: 16 heures environ  
Autonomie en lecture: 16 heures environ  
Charge du casque: 2 heures environ  
Poids: 185 g

**DE**  
**Technische Eigenschaften:**  
Bluetooth®: v5  
Unterstützte Profile: Headset – Handsfree – A2DP – AVRCP  
Reichweite: 10 m  
Bluetooth®-Frequenzbereich: 2402 MHz-2480 MHz  
Akkuspannung: 3,7 V  
Akkukapazität: 300 mAh  
USB-C-Buchse Spannung (V): 5 V  
USB-C-Buchse Strom (A): 1 A  
ERP: 4 dBm  
Ausgangsleistung: 0.024W (in BT mode)  
Sprechzeit: ca. 16 Stunden  
Musikwiedergabezeit: ca. 16Stunden  
Aufladen des Headsets: etwa 2 Stunden  
Gewicht: 185 g

**ES**  
**Especificaciones técnicas:**  
Bluetooth®: v5  
Perfiles admitidos: Headset – Handsfree – A2DP – AVRCP  
Alcance: 10 m  
Rango de frecuencia Bluetooth®: 2402 MHz - 2480 MHz  
Voltaje de la batería: 3,7 V  
Capacidad de la batería: 300 mAh  
Voltaje (V) del puerto USB-C: 5 V  
Corriente (A) del puerto USB-C: 1 A  
ERP: 4 dBm  
Potencia de salida: 0.024W (in BT mode)  
Tiempo de conversación: 16 horas aprox.  
Tiempo de reproducción: 16 horas aprox.  
Carga de los cascos: 2 horas aprox.  
Peso: 185 g

**TR**  
**Teknik özellikler:**  
Bluetooth®: v5  
Desteklenen profiller: Kulaklık – Eller Serbest – A2DP – AVRCP  
Kapsama alanı: 10m  
Bluetooth® Frekans Aralığı: 2402MHz-2480MHz  
Pil Voltajı: 3.7V  
Pil Kapasitesi: 300mAh  
USB-C port Gerilimi (V): 5V  
USB-C port akımı (A): 1A  
ERP: 4dBm  
Output Power (Çıkış Gücü): 0.024W (in BT mode)  
Konuşma Süresi: Yaklaşık 16 saat  
Çalma Süresi: Yaklaşık 16 saat  
Kulak üstü büyük kulaklıkların yeniden şarj edilmesi: Yaklaşık 2saat  
Ağırlık: 185g

**NL**  
**Technische gegevens:**  
Bluetooth®: v5  
Ondersteunde profielen: Koptelefoon – Handsfree – A2DP – AVRCP  
Bereik: 10 m  
Frequentiebereik Bluetooth®: 2402MHz-2480MHz  
Batterijspanning: 3,7V  
Batterijcapaciteit: 300mAh  
Spanning USB-C-poort (V): 5V  
Stroomsterkte USB-C-poort (A): 1A  
ERP: 4dBm  
Uitgangsvermogen: 0.024W (in BT mode)  
Stand-by: ongeveer 120 uur  
Tijdsduur in gesprek: ongeveer 16 uur  
Afspeeltijd: ongeveer 16 uur  
Oplaadtijd koptelefoon: ongeveer 2 uur  
Gewicht: 185 g

**FI**  
**Kuulokkeen tekniset:**  
Bluetooth®: v5  
Tuettut profiilit: Headset – Handsfree – A2DP – AVRCP  
Kantama: 10 m  
Bluetooth® taajuusalue: 2402MHz-2480MHz  
Akkujännite: 3,7 V  
Akun kapasiteetti: 300mAh  
USB-C -portin jännite (V): 5 V  
USB-C -portin virta (A): 1 A  
ERP: 4dBm  
Lähtöteho: 0.024W (in BT mode)  
Valmiustila: noin 120 tuntia  
Puhelu-aika: noin 16 tuntia  
Musiiikkuntelu-aika: noin 16 tuntia  
Kuulokkeiden lataaminen: noin 2 tuntia  
Paino: 185 g

**SV**  
**Tekniska specifikationer:**  
Bluetooth®: v5  
Profiler som stöds: Headset – Handsfree – A2DP – AVRCP  
Räckvidd: 10 m  
Bluetooth® frekvensområde: 2402MHz-2480MHz  
Batterispänning: 3,7V  
Batterikapacitet: 300mAh  
USB-C-portens spänning (V): 5V  
USB-C-port ström (A): 1A  
ERP: 4dBm  
Uttagseffekt: 0.024W (in BT mode)  
Standby: Cirka 120 timmar  
Taltid: Cirka 16 timmar  
Speltid: Cirka 16 timmar  
Laddning av hörlurarna: Ca. 2 timmar  
Vikt: 185g

**DA**  
**Tekniske specifikationer:**  
Bluetooth®: v5  
Understøttede profiler: Headset – Håndfri – A2DP – AVRCP  
Rækkevidde: 10 m  
Bluetooth® frekvensområde: 2402 MHz - 2480 MHz  
Batterispænding: 3,7 V  
Batterikapacitet: 300 mAh  
USB-C-portens spænding (V): 5 V  
USB-C-portens strøm (A): 1 A  
ERP: 4dBm  
Udgangseffekt: 0.024W (in BT mode)  
Tale tid: Cirka 16 timer  
Afspilningstid: Cirka 16 timer  
Opladning af hovedtelefoner: Cirka 2 timer  
Vægt: 185 g

**NO**  
**Tekniske egenskaper:**  
Bluetooth®: v5  
Støttede profiler: Headset – Handsfree – A2DP – AVRCP  
Rekkevidde: 10 m  
Bluetooth®-frekvensområde: 2402 MHz-2480 MHz  
Batterispennning: 3,7V  
Batterikapacitet: 300 mAh  
Spennning USB-C-port (V): 5V  
Strømstyrke USB-C-port (A): 1A  
ERP: 4dBm  
Utgangseffekt: 0.024W (in BT mode)  
Tale tid: Cirka 16 timer  
Spilletid: Cirka 16 timer  
Lade hodetelefonene: ca. 2 timer  
Vekt: 185 g

