



11203



LEGO® Builder



LEGO.com/sustainable-packaging

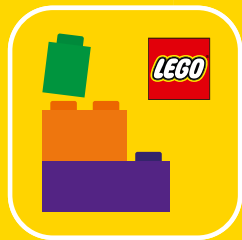


FR
DONNEZ
OU
RECYCLEZ

 OU  OU 

ASSOCIATION MAGASIN DÉCHÈTERIE

Adresses sur quefairedemesdechets.fr



Q LEGO® Builder

BUILDER



Apple and the Apple logo are trademarks of Apple Inc., registered in the U.S. and other countries and regions. App Store is a service mark of Apple Inc. Google Play and the Google Play logo are trademarks of Google LLC. Tencent and the Tencent logo are trademarks of Tencent Inc.

Q [LEGO.com/devicecheck](https://www.lego.com/devicecheck)

EN Ask parents' permission before going online | DE Eltern um Erlaubnis bitten, bevor du online gehst | FR Demande l'autorisation d'un parent avant d'aller en ligne | IT Chiedi il permesso ai tuoi genitori prima di andare online | ES Pídeles permiso a tus papás antes de conectarte a Internet | PT Peça autorização aos pais antes de acederes online | ZH 上网前应先征得父母的同意 | PL Poproś rodziców o zgodę, zanim wejdiesz do Internetu | CS Než půjdeš na internet, požádej rodiče o svolení | SK Skôr než pôjdeš na internet, vypýtaj si povolenie od rodičov | HU Kérj szülői engedélyt, mielőtt online csatlakoznál! | UA Запитуйте дозволу батьків, перш ніж користуватися інтернетом | RO Cere permisiunea părinților înainte de a te conecta online | BG Поискайте разрешение от родител, преди да влезете онлайн | LV Pirms došanās tiešsaistē palūdz atļauju vecākiem | ET Enne Interneti kasutamist küsi vanematelt luba | LT Prieš prisijungdami prie interneto, atsiklauskite tėvų

EXPLORE LEGO® BLUEY DIGITAL GAMES

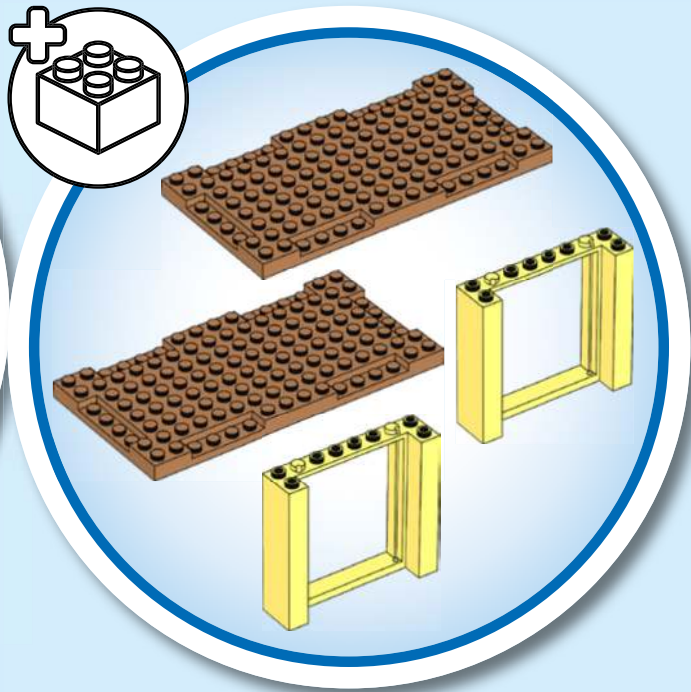
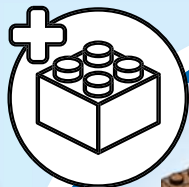


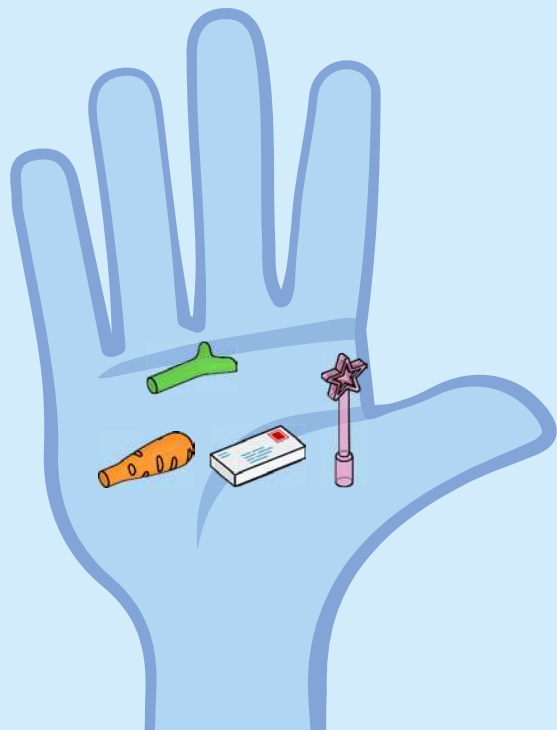
Explore LEGO® BLUEY digital games
Entdecke die digitalen LEGO® BLUEY Spiele
Découvrez les jeux numériques LEGO® BLUEY
Explora i giochi digitali LEGO® BLUEY
Explora los juegos digitales LEGO® BLUEY
Explora os jogos digitais LEGO® BLUEY
探索乐高®布鲁伊数字游戏
Poznaj gry cyfrowe z serii LEGO® BLUEY
Prozkoumejte digitální hry LEGO® BLUEY
Preskúmajte digitálne hry LEGO® BLUEY
Fedez fel a digitális a LEGO® BLUEY játékokat!
Відкрийте для себе цифрові ігри LEGO® BLUEY
Explorează jocurile digitale LEGO® BLUEY
Открийте дигиталните игри LEGO® BLUEY
Izpēti LEGO® BLUEY digitālās spēles
Avasta LEGO® BLUEY digitālās spēles
Atraskite skaitmeninius LEGO® BLUEY žaidimus

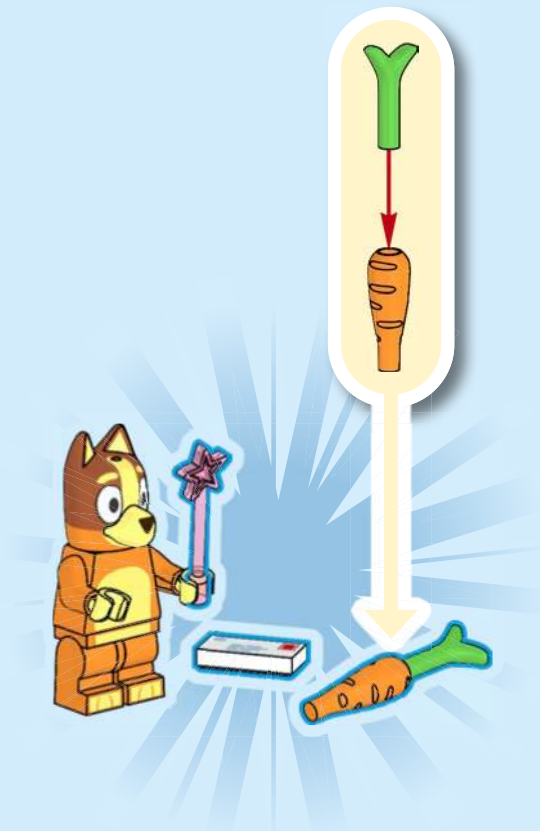
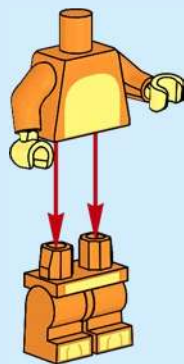
4+

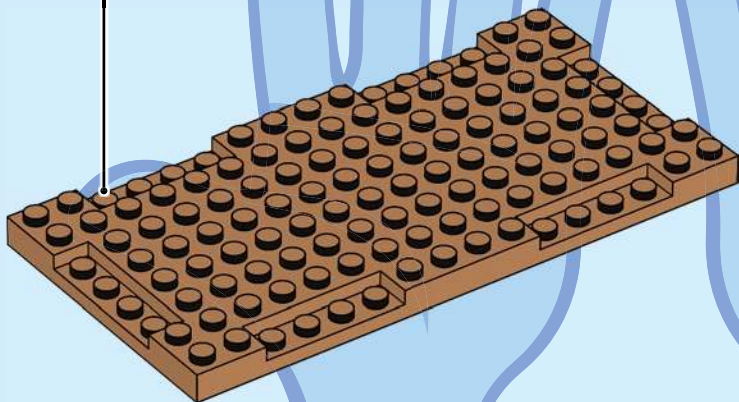
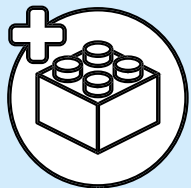


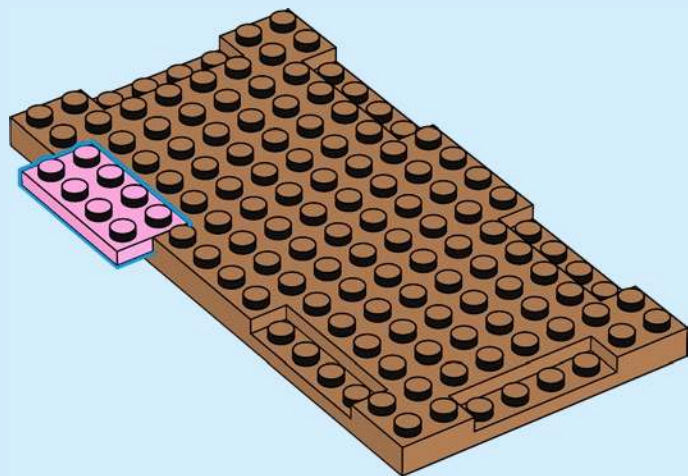
Apple and the Apple logo are trademarks of Apple Inc., registered in the U.S. and other countries and regions. App Store is a service mark of Apple Inc. Google Play and the Google Play logo are trademarks of Google LLC.

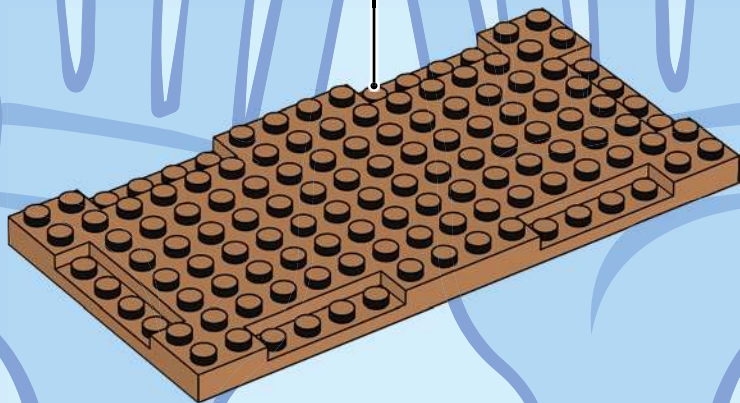
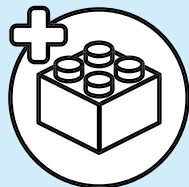


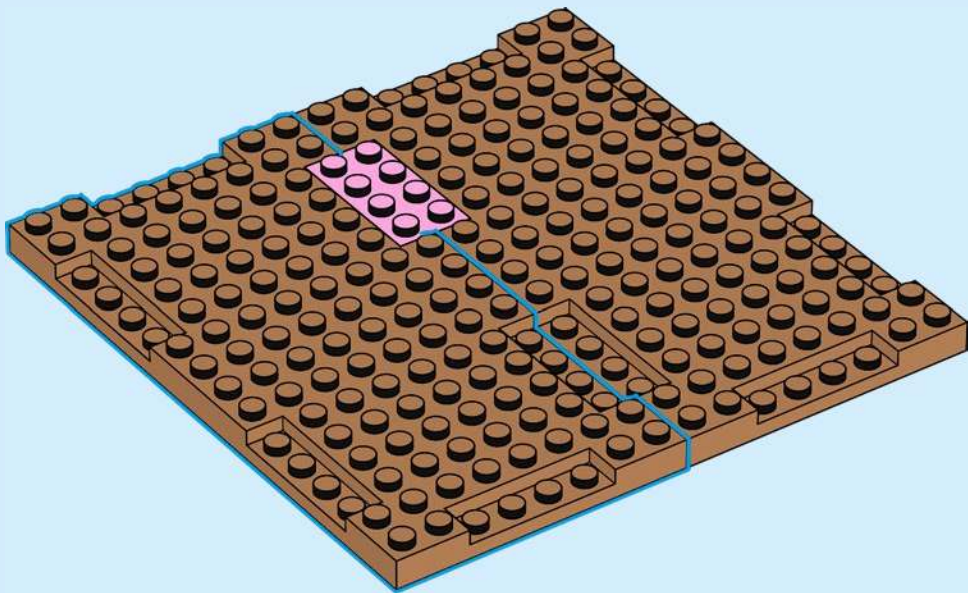


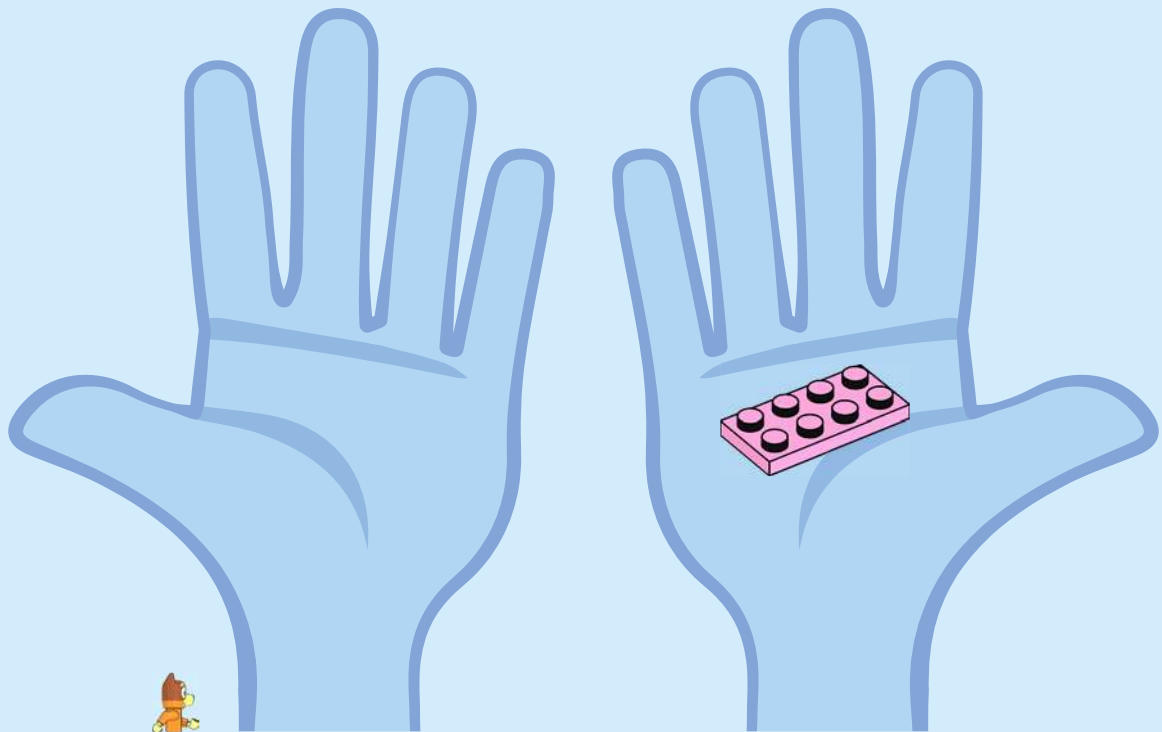


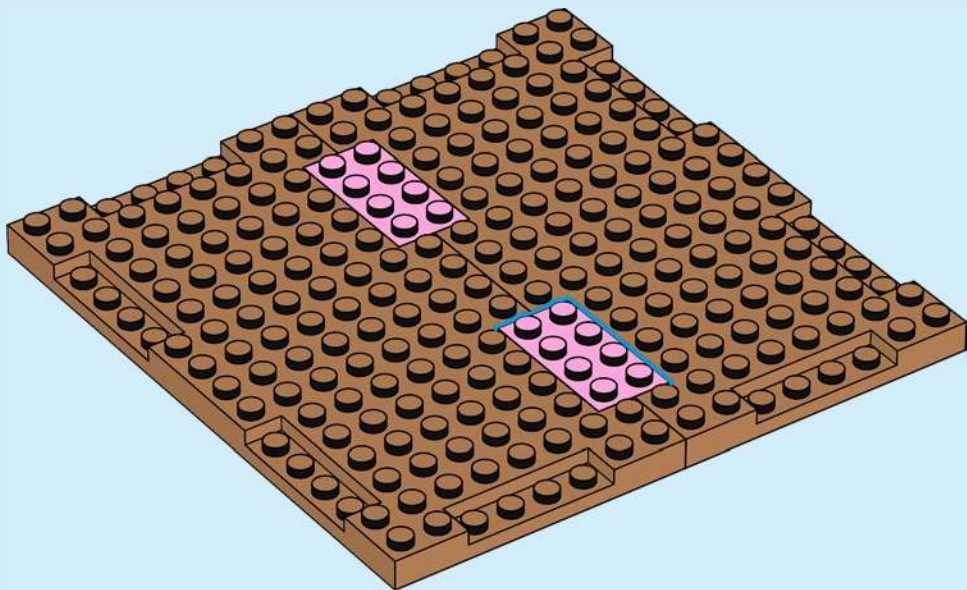


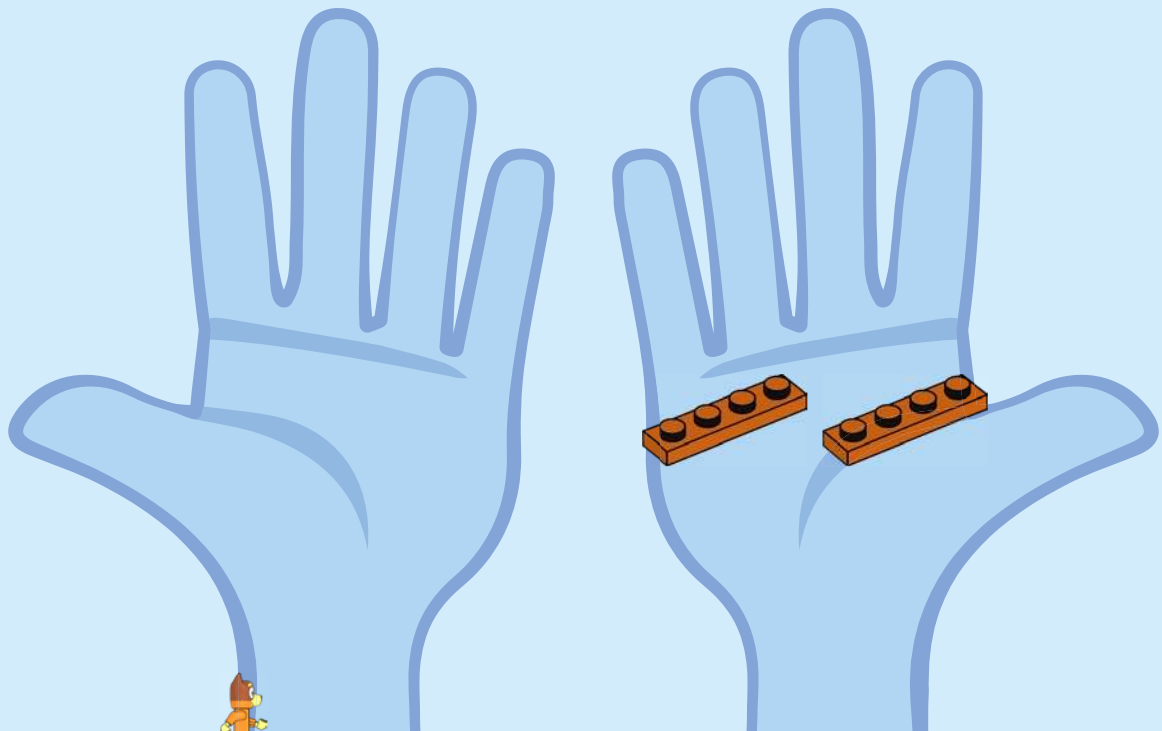




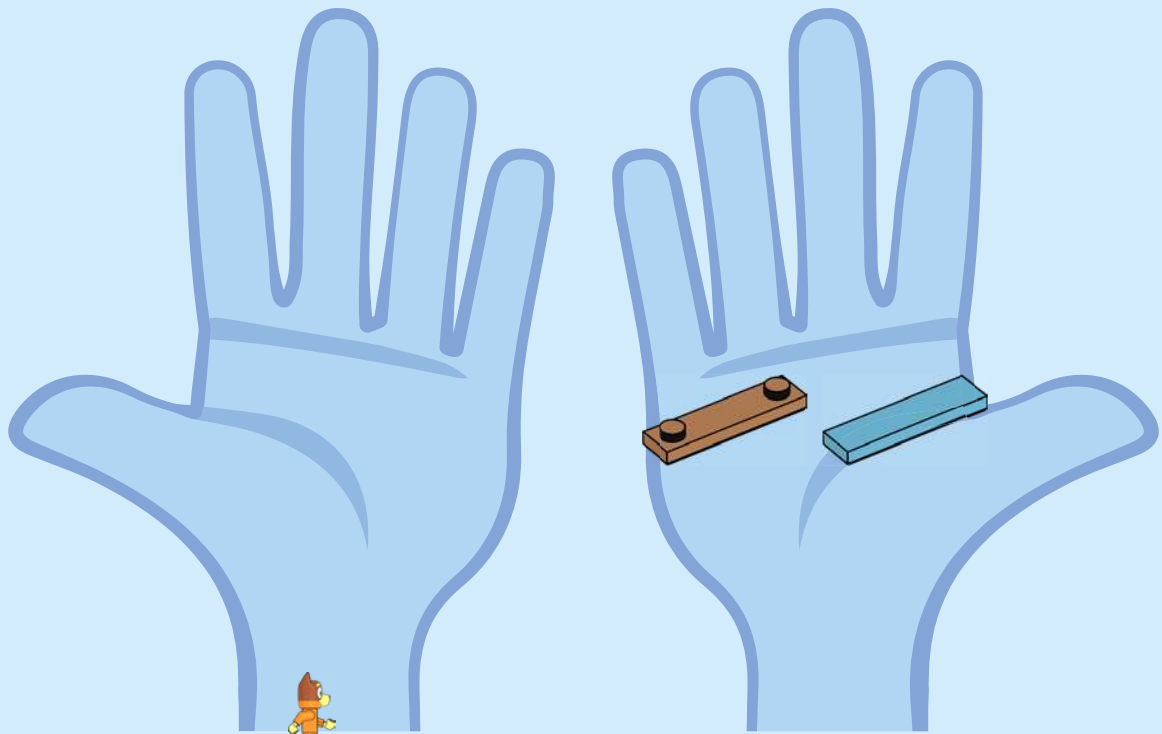


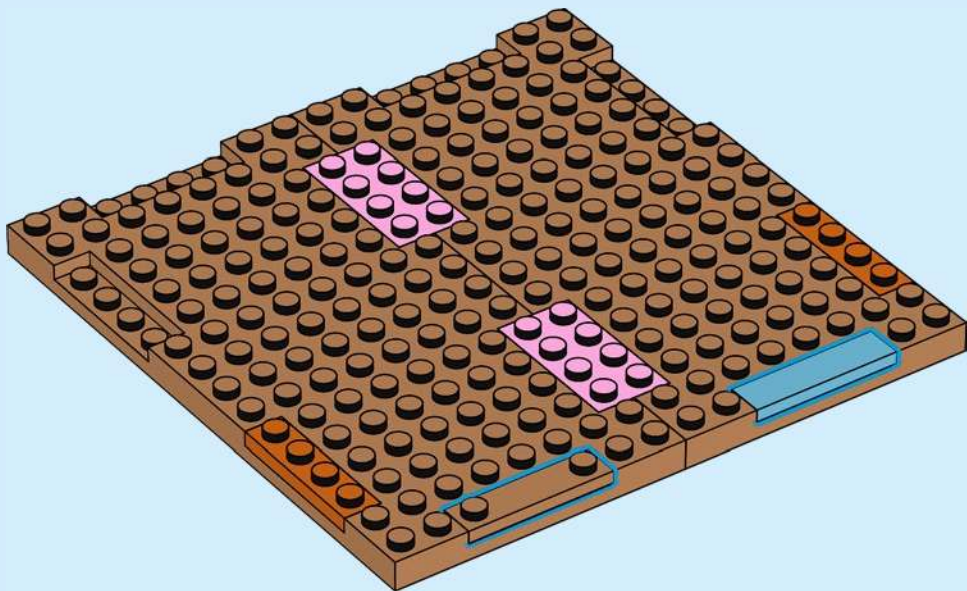


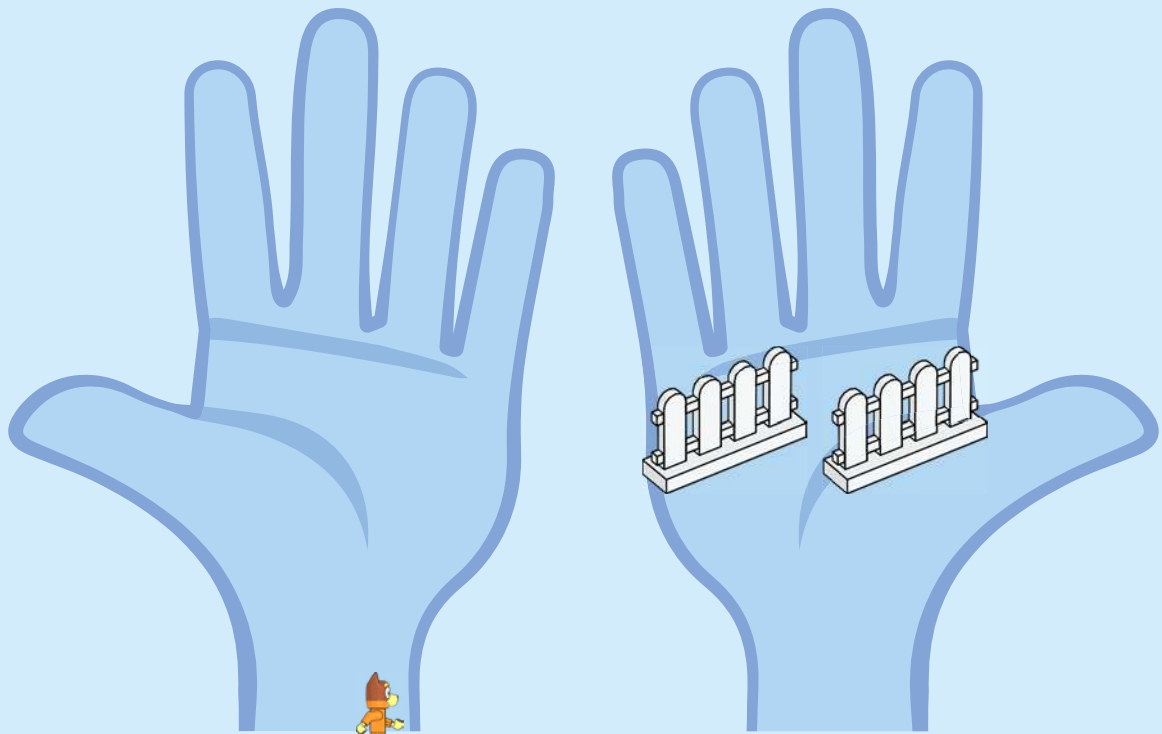


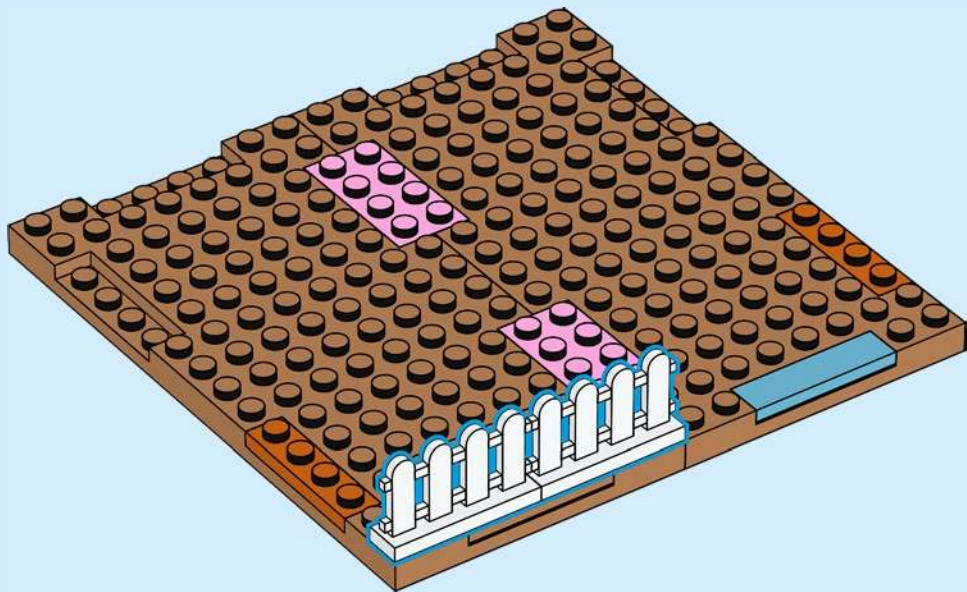


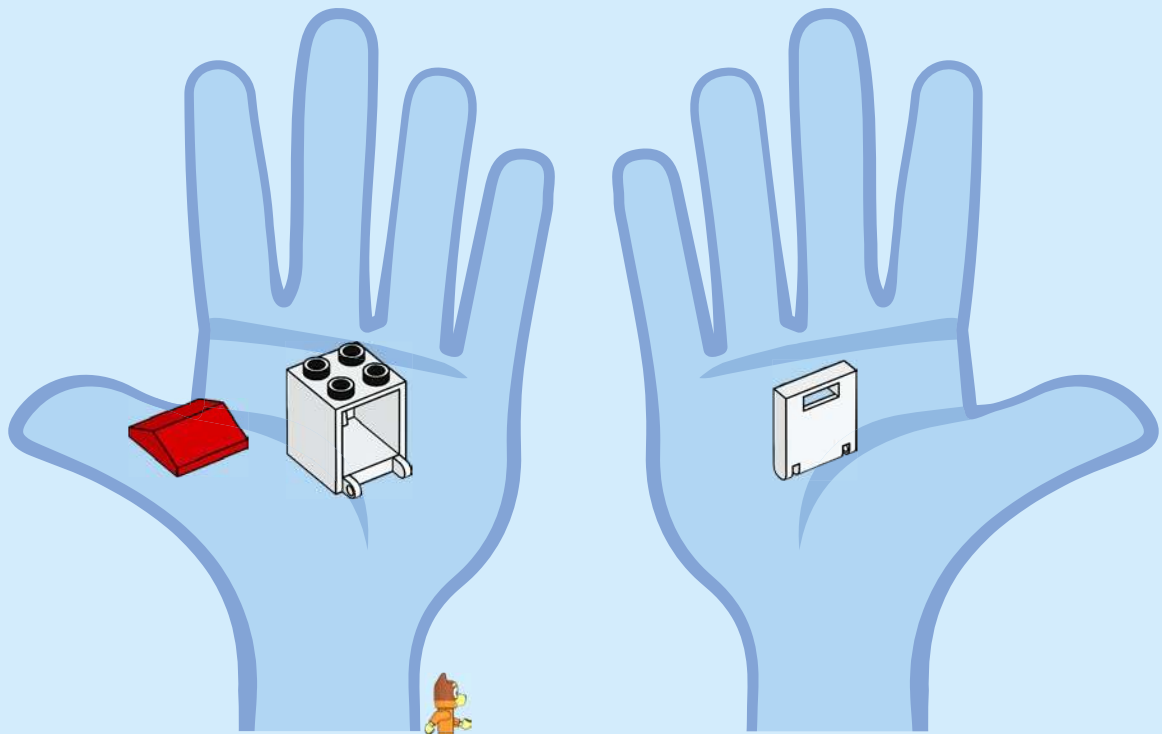


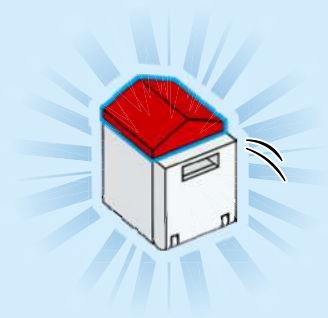
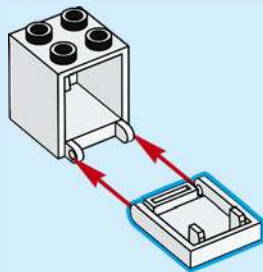


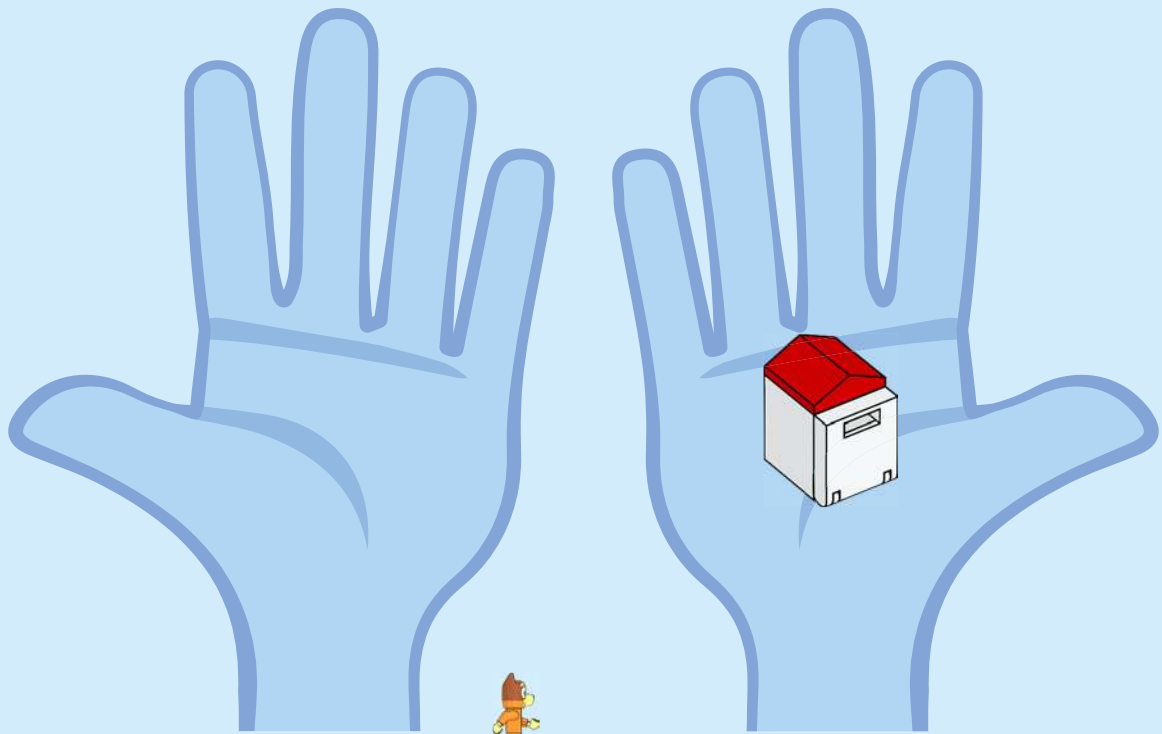


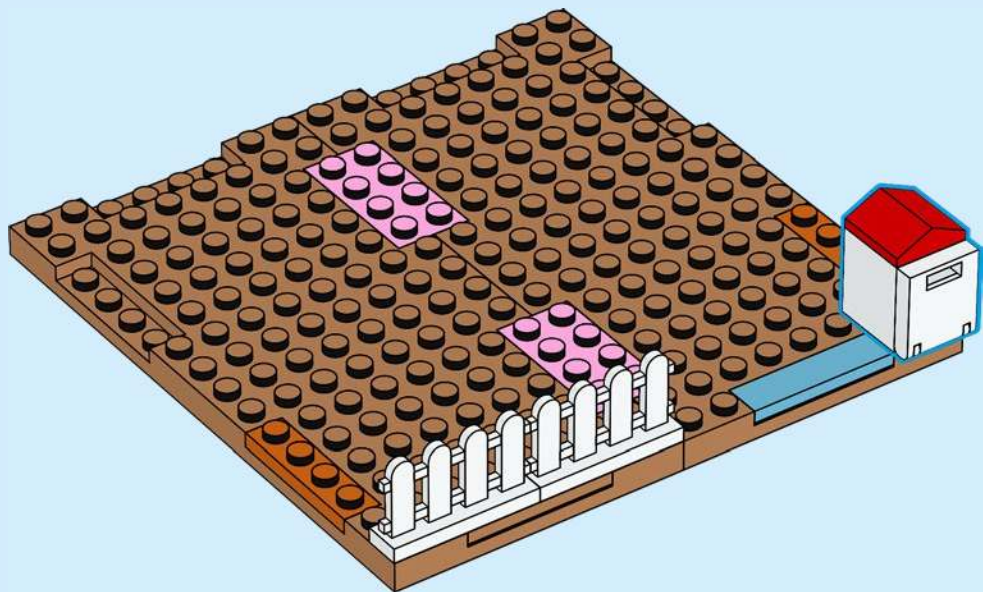


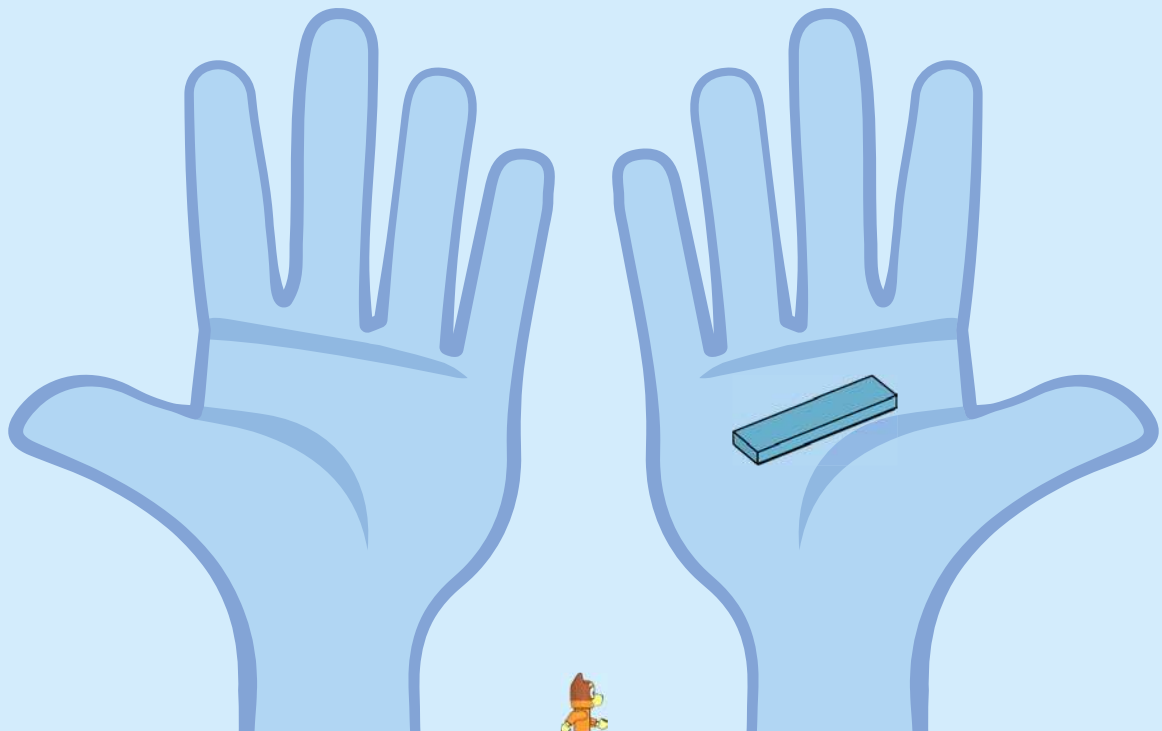


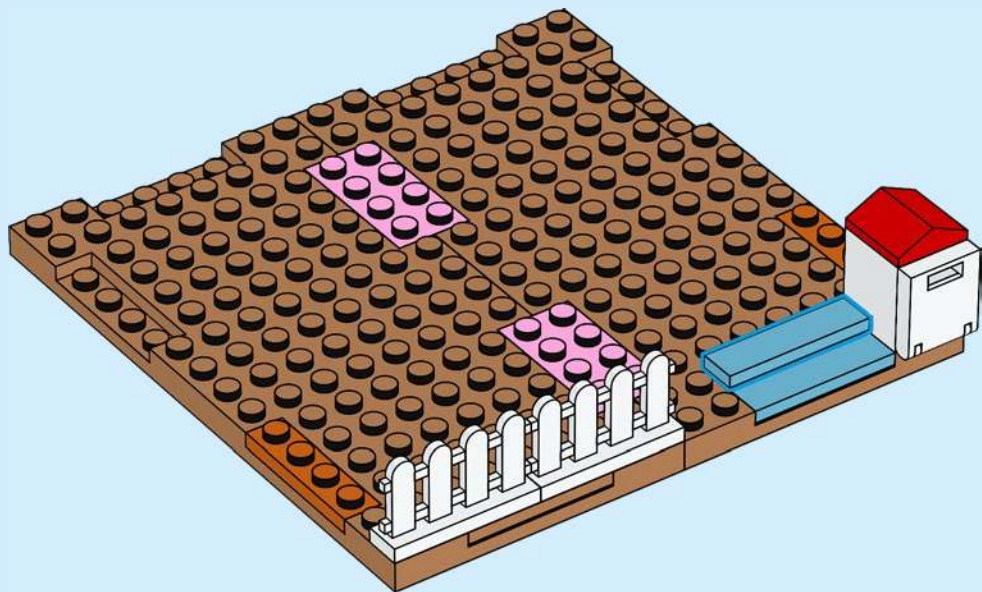


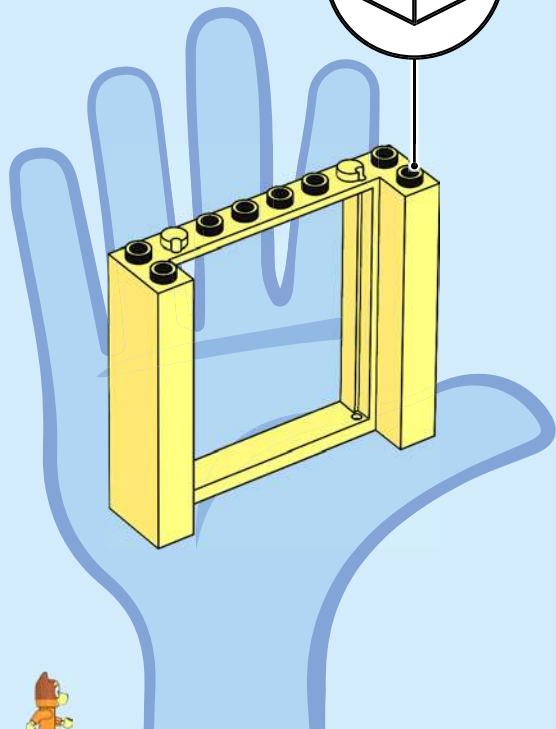


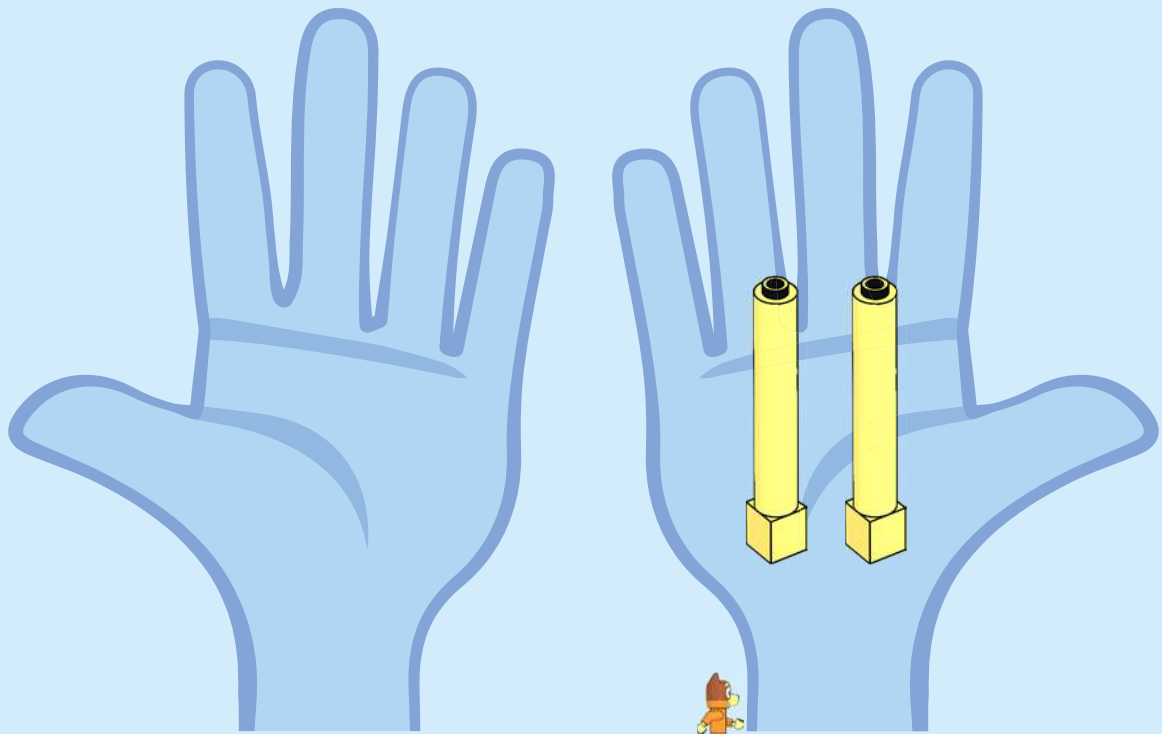


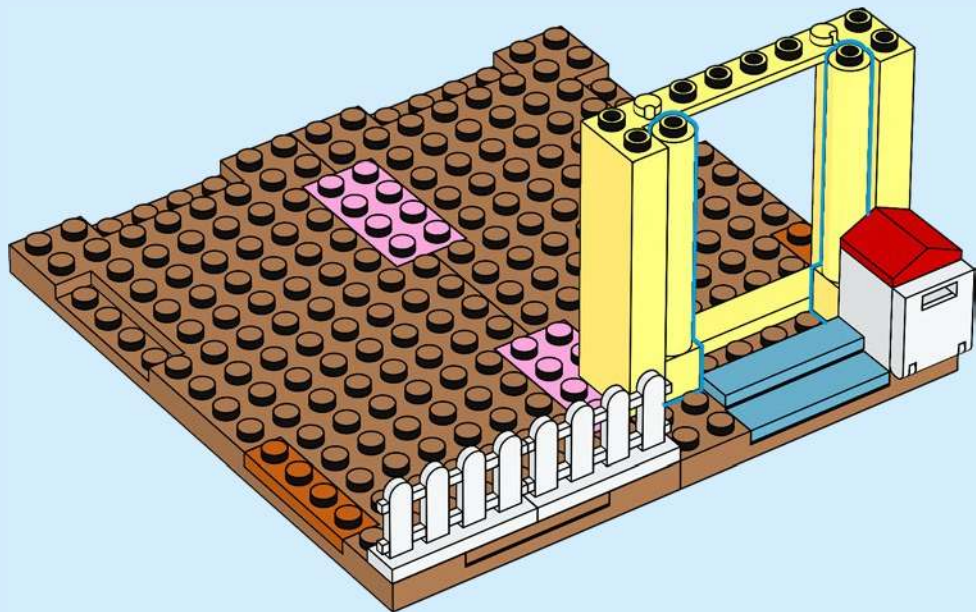


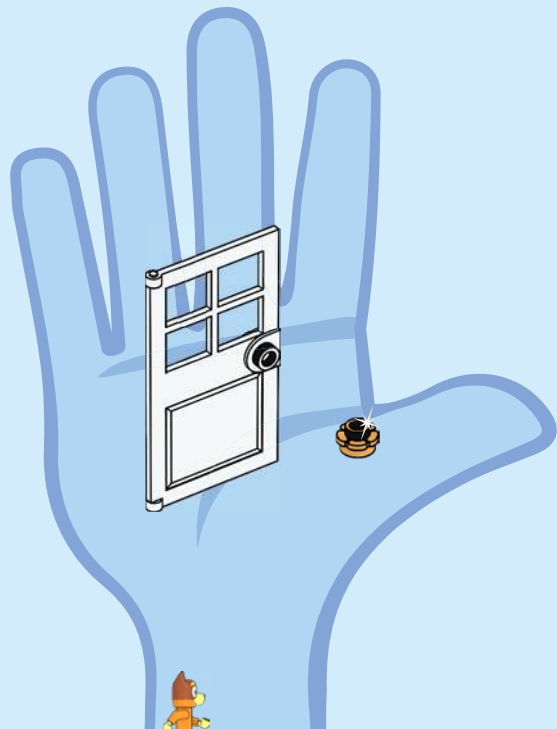
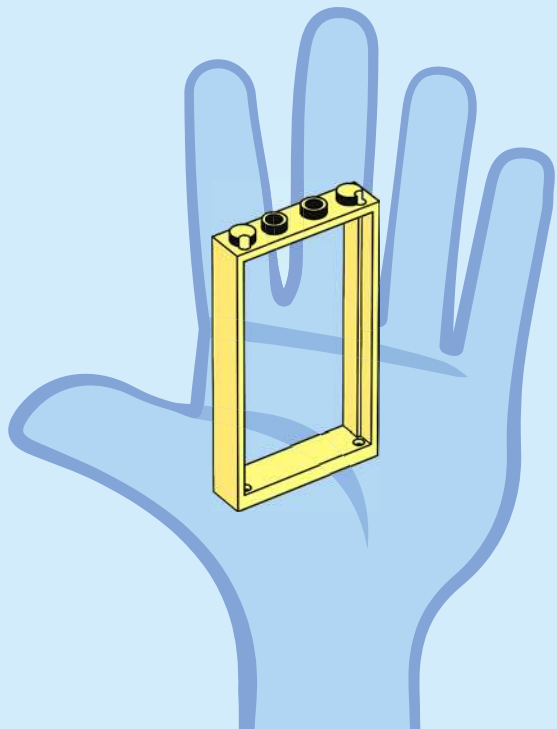


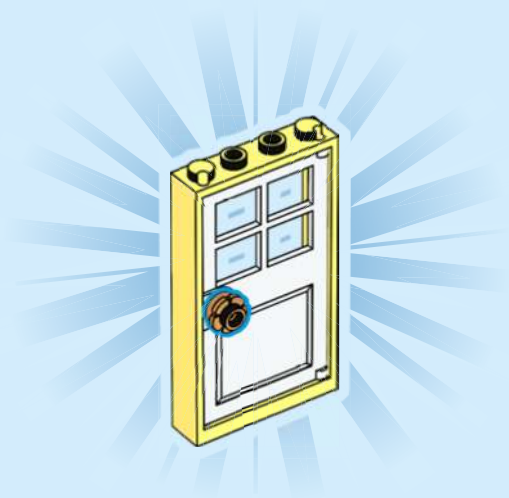
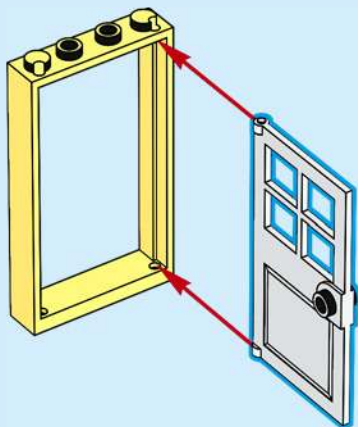
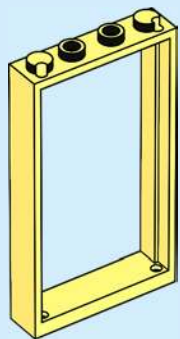


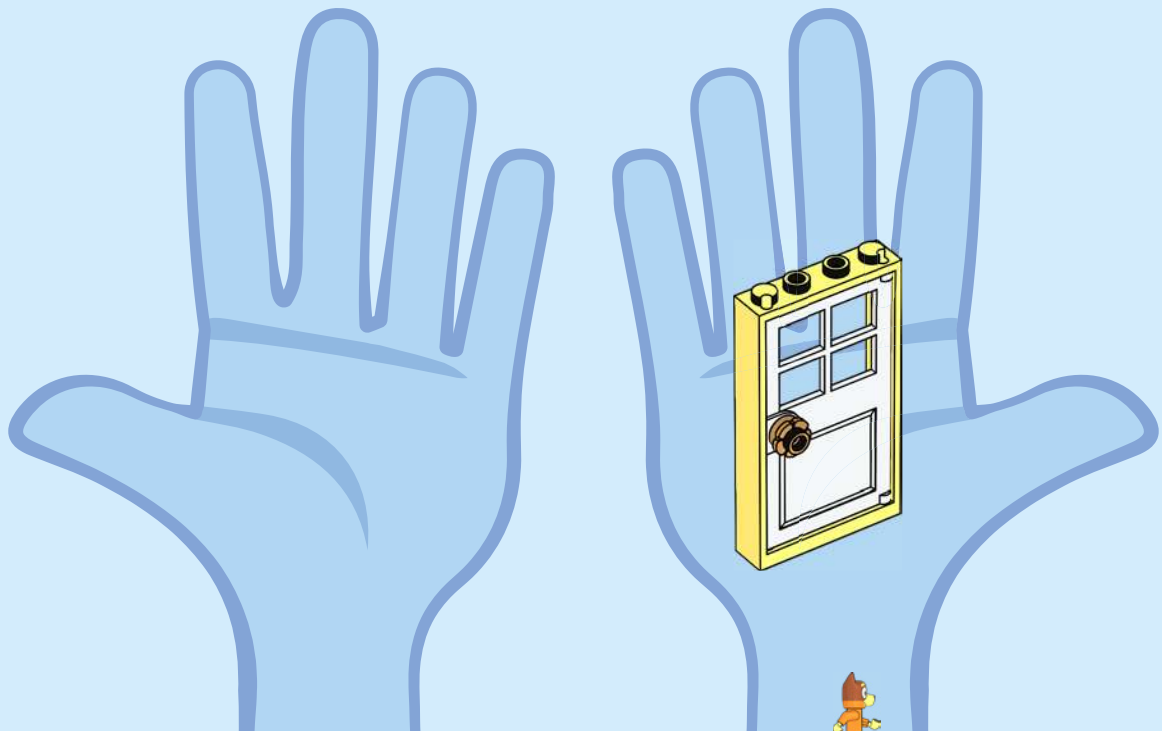


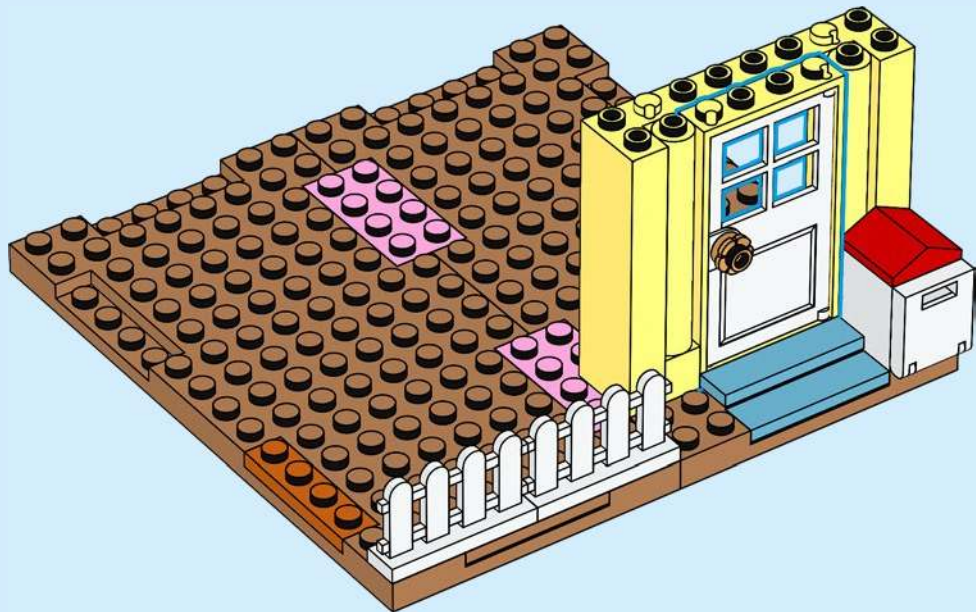


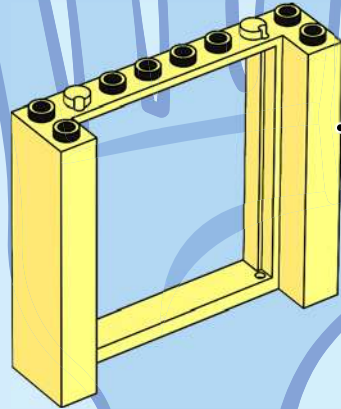
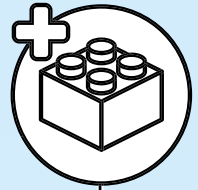


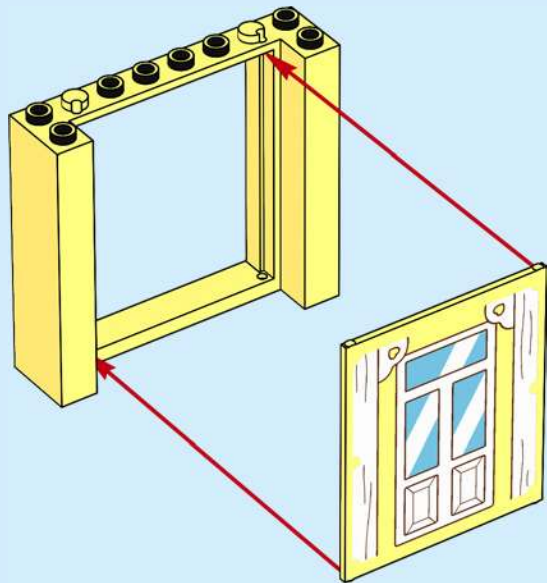


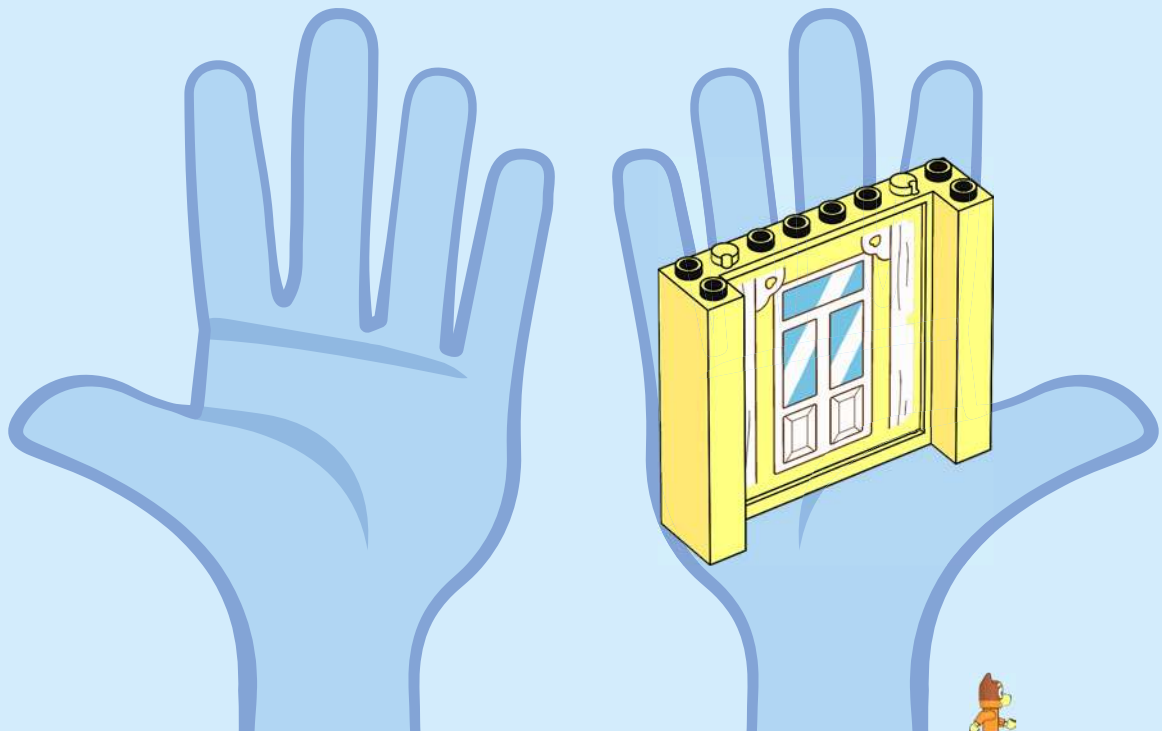


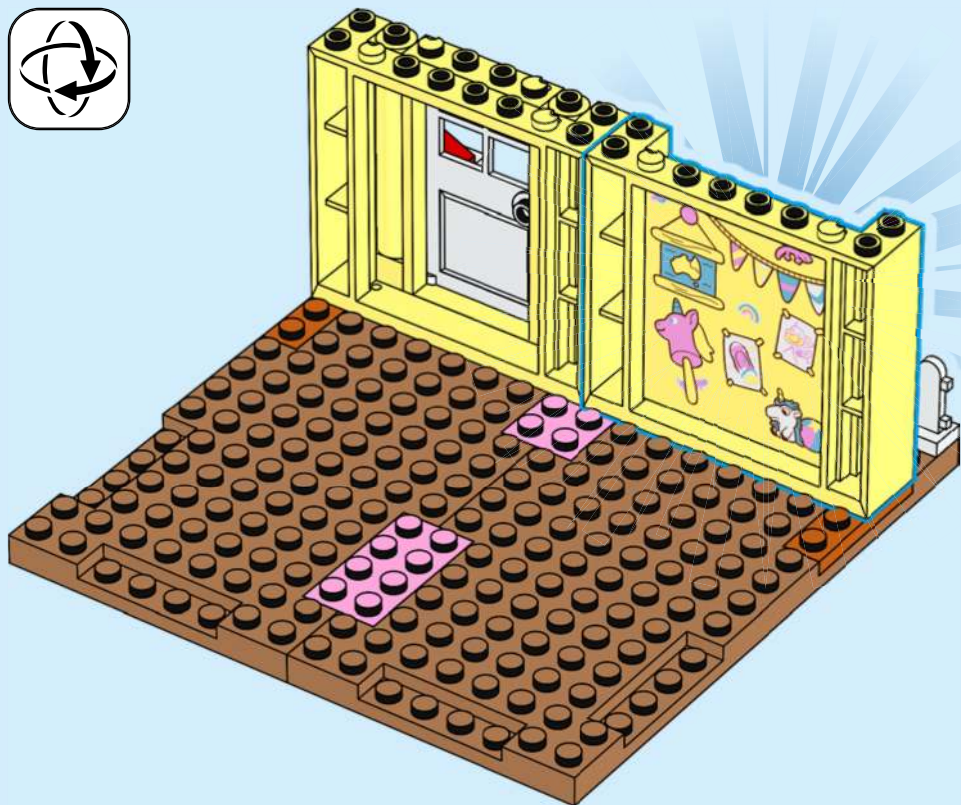


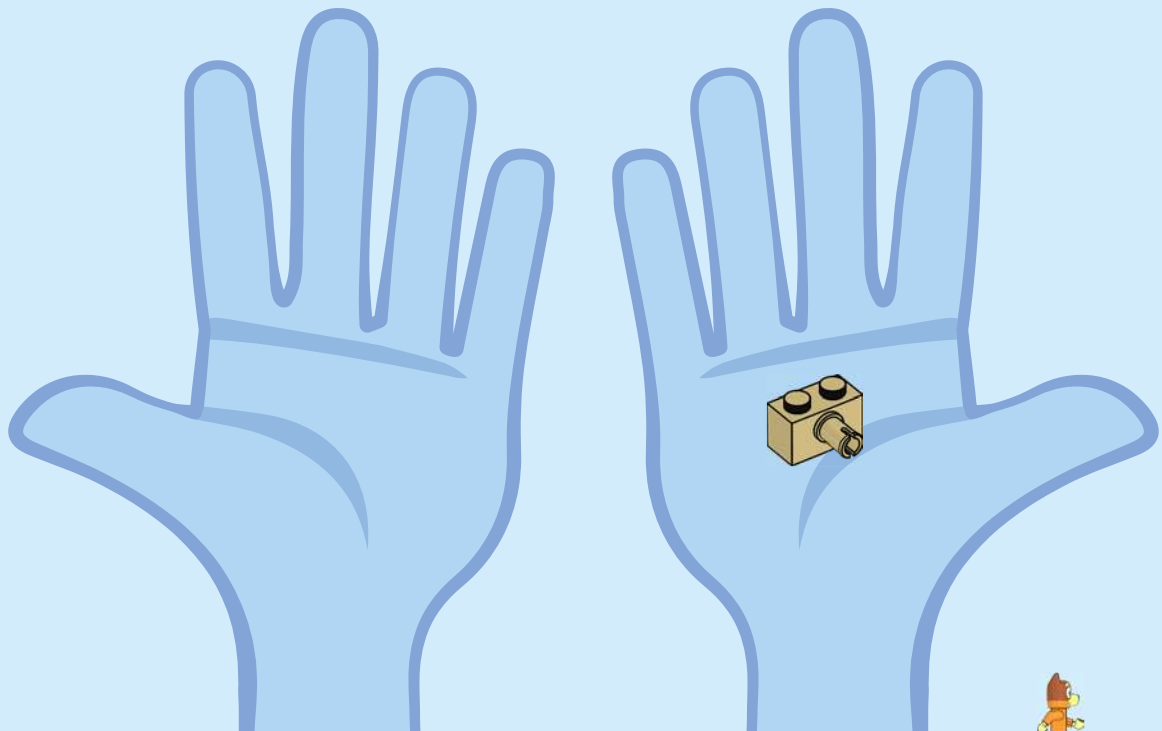


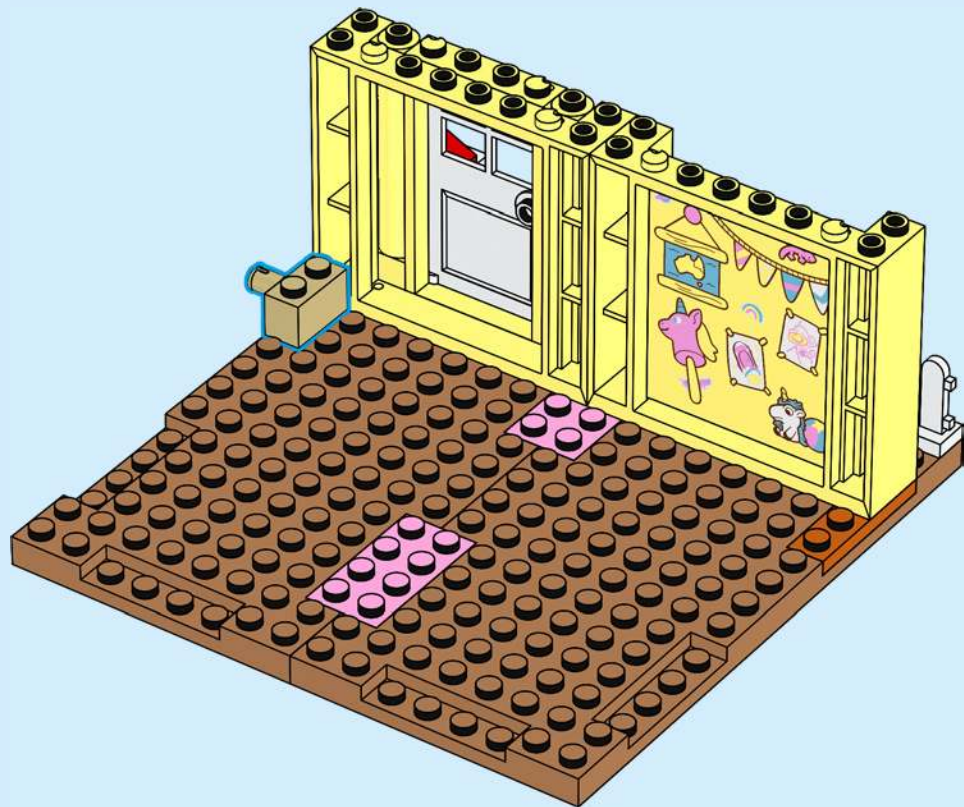


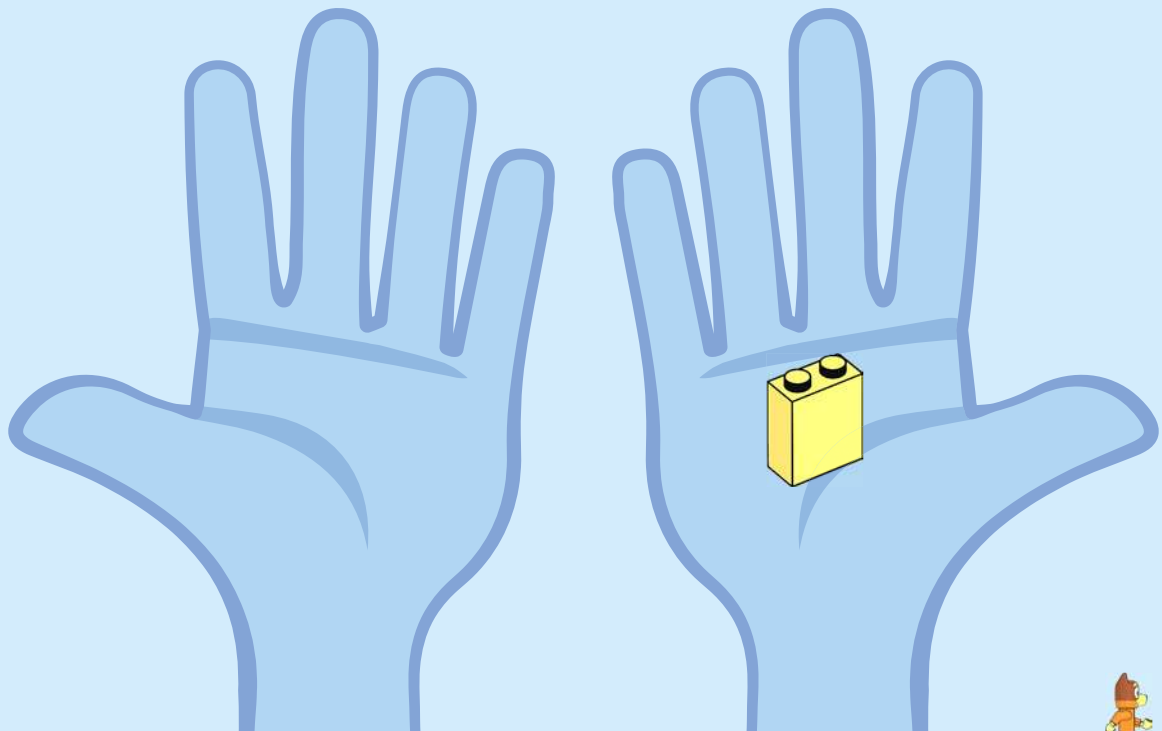


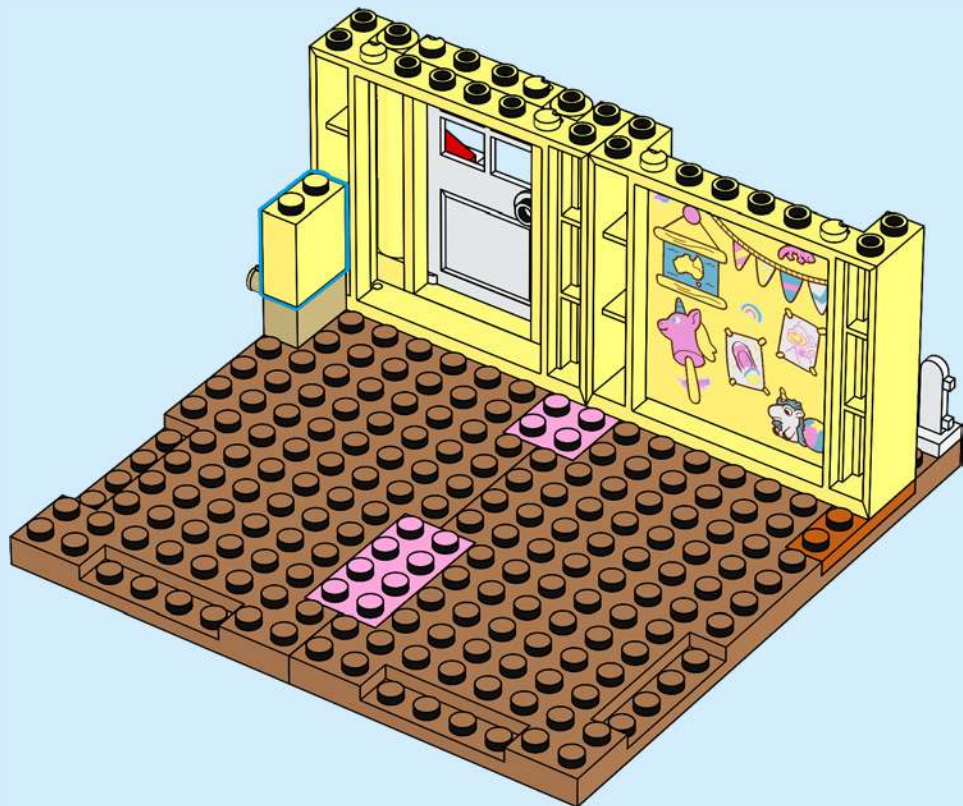


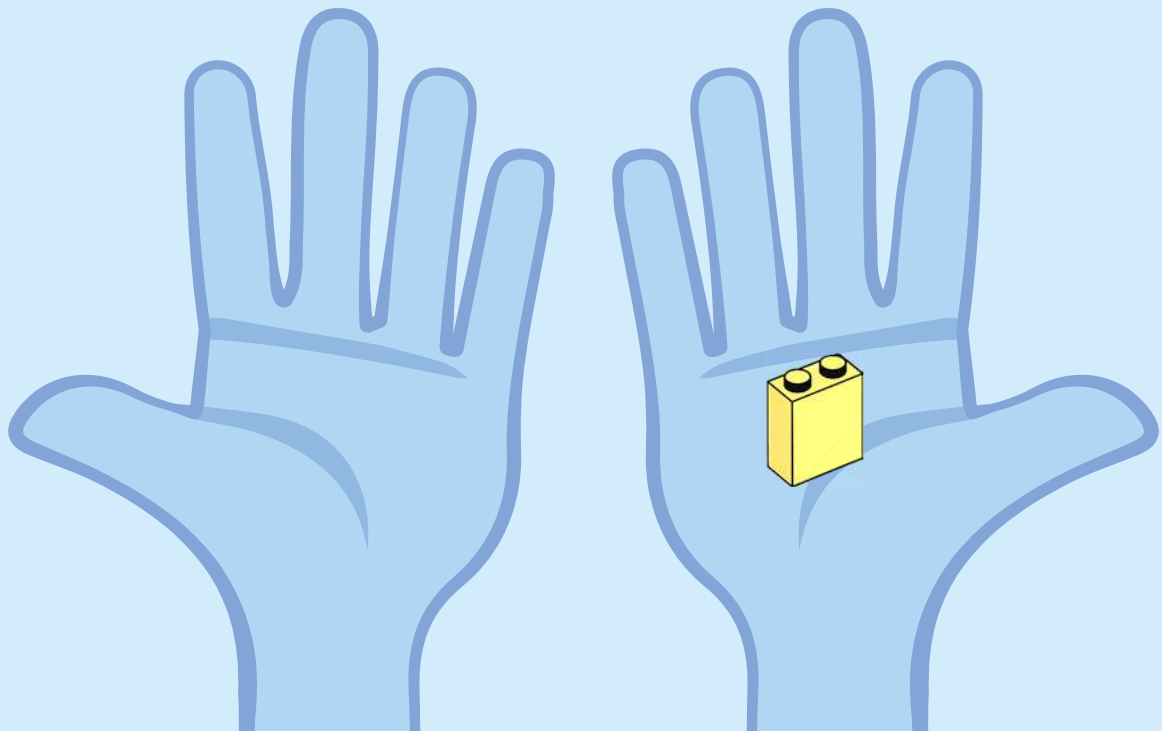


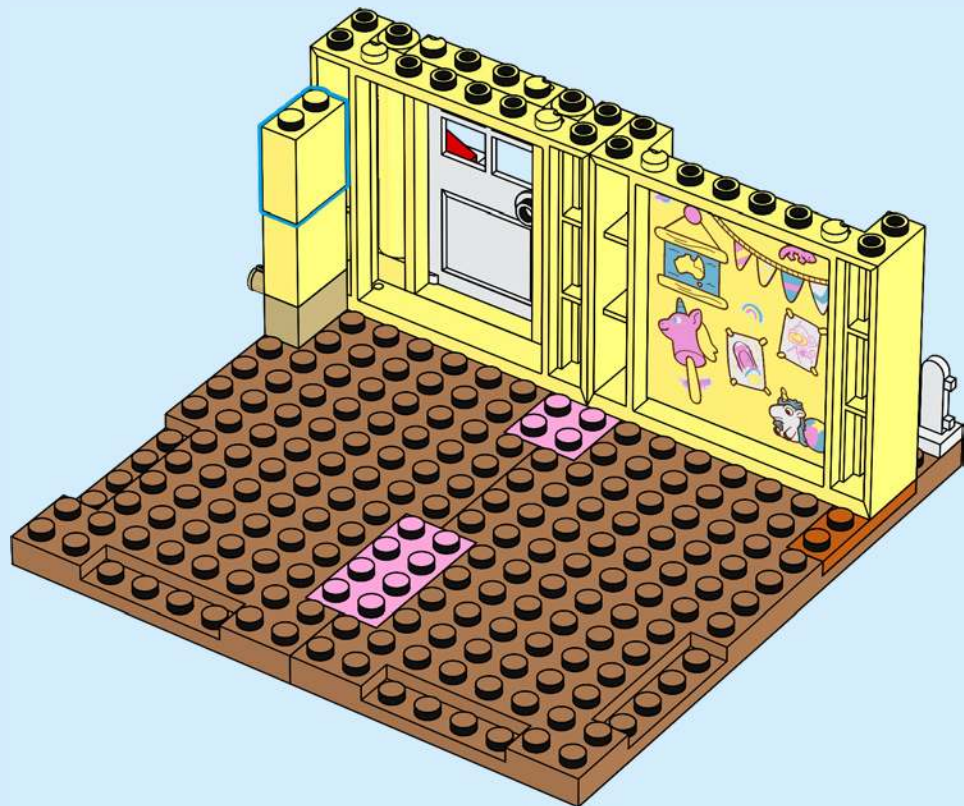


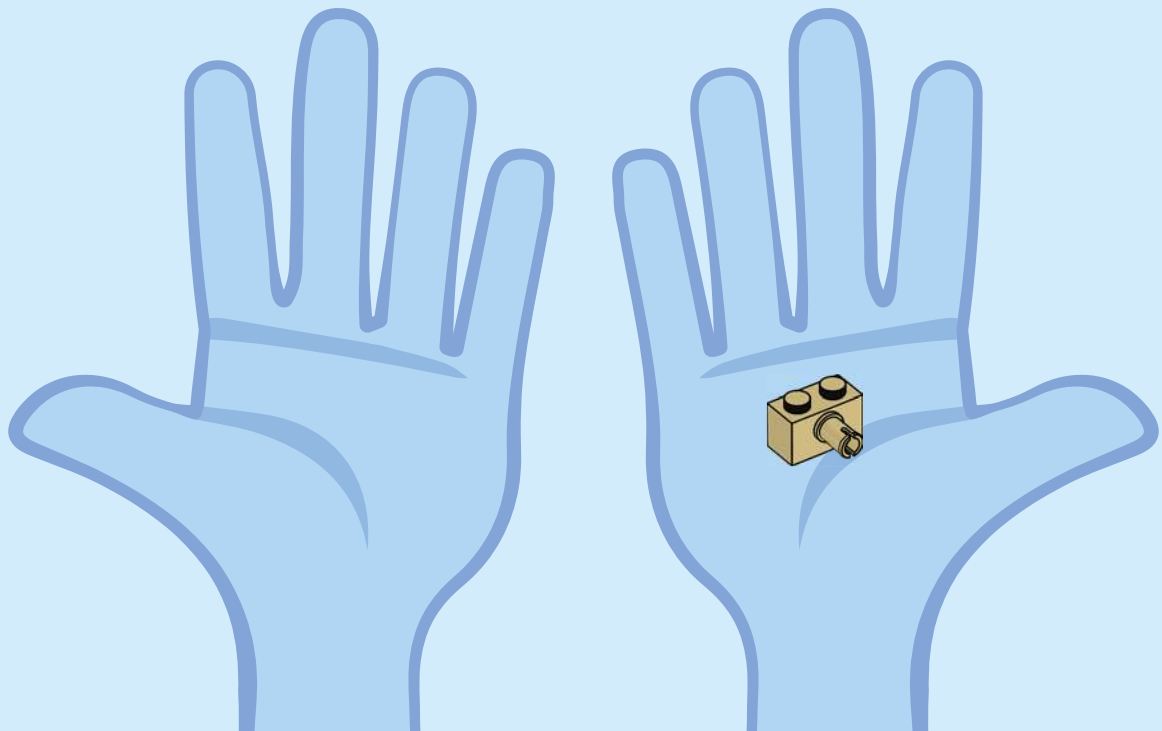


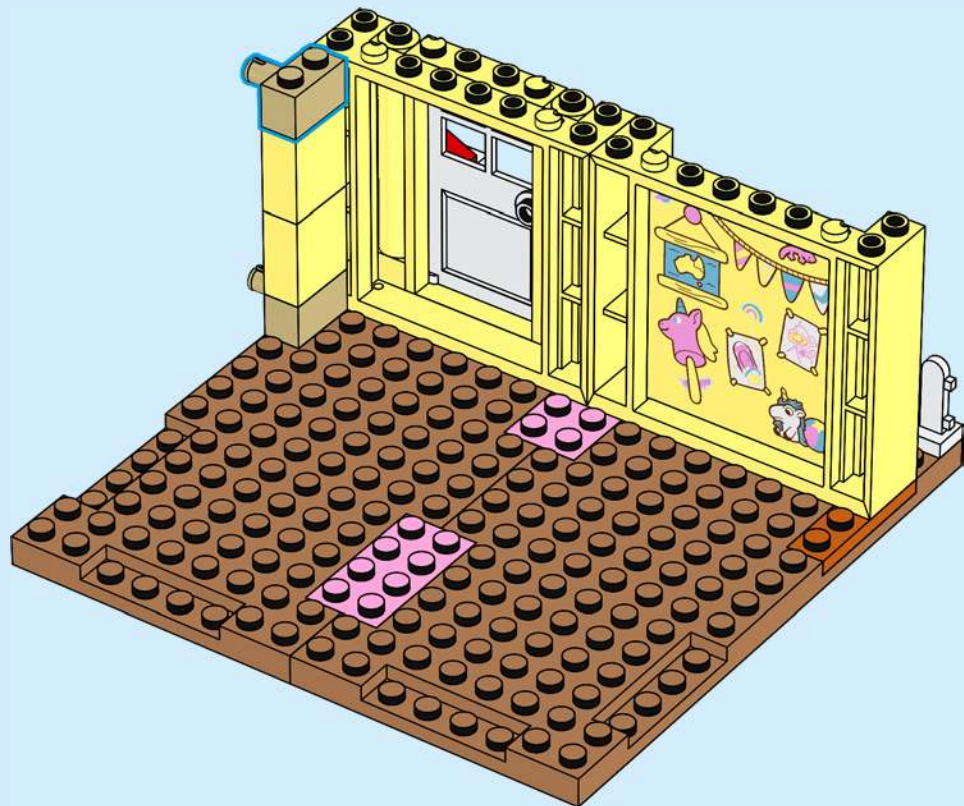


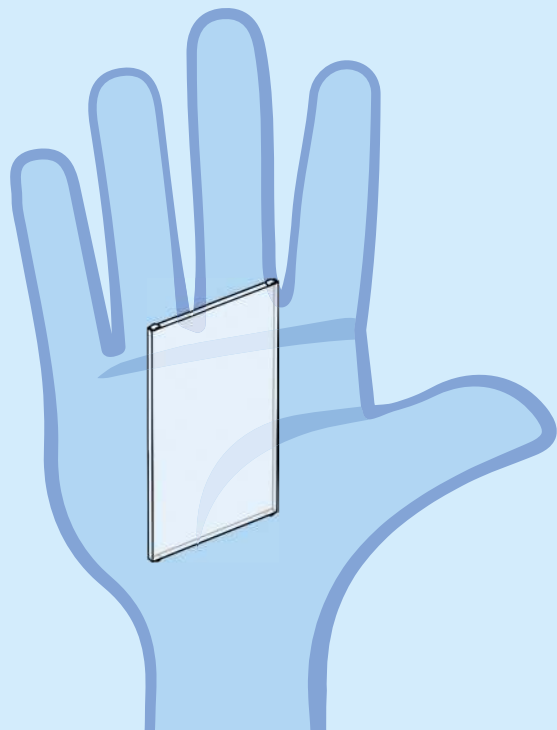
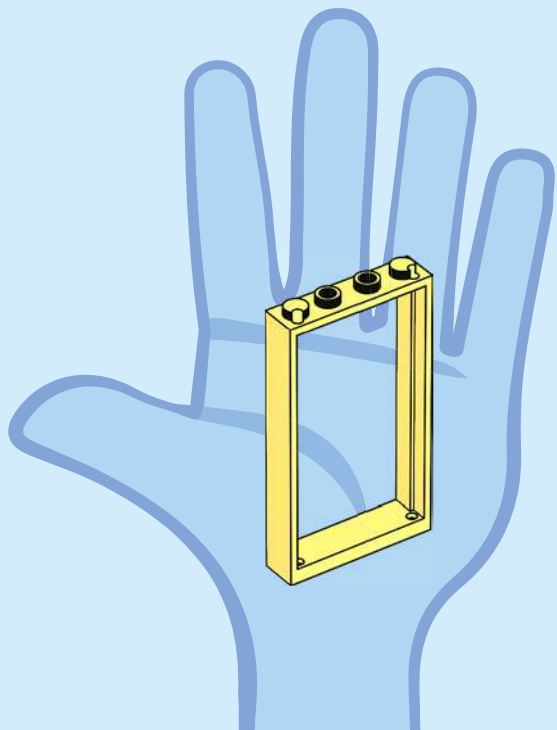


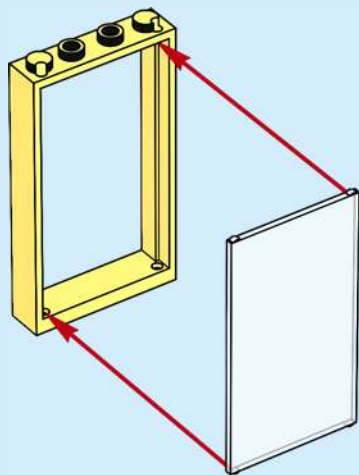


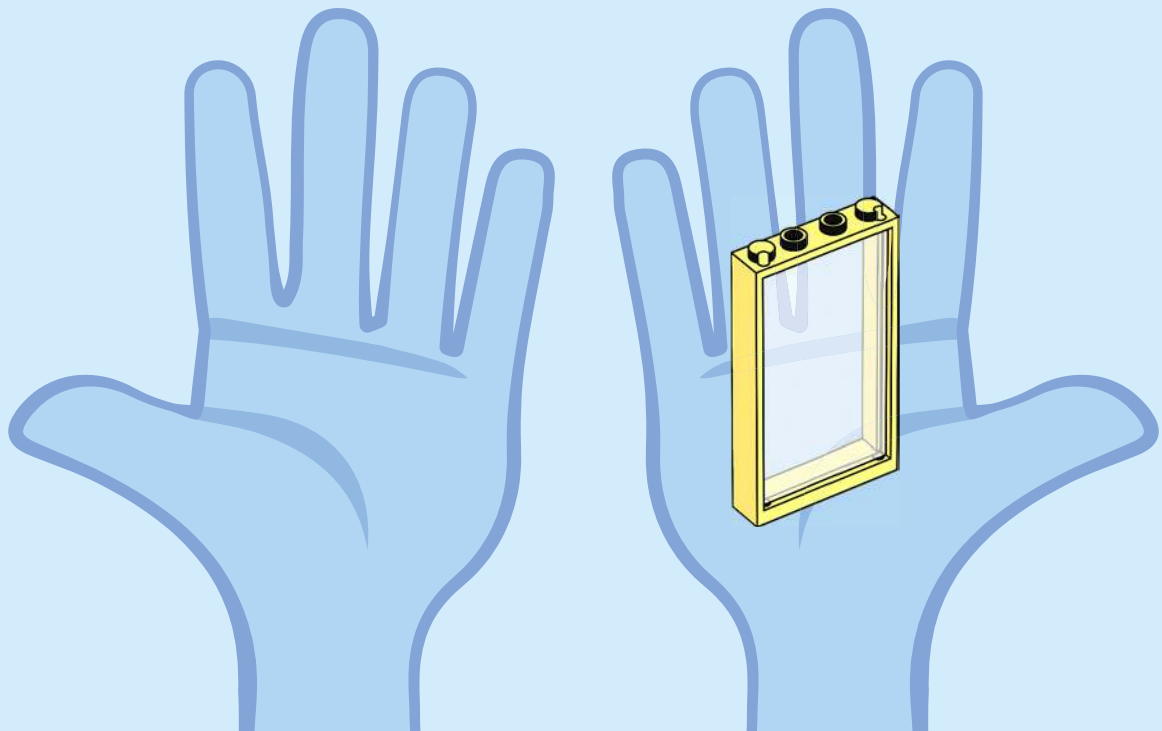


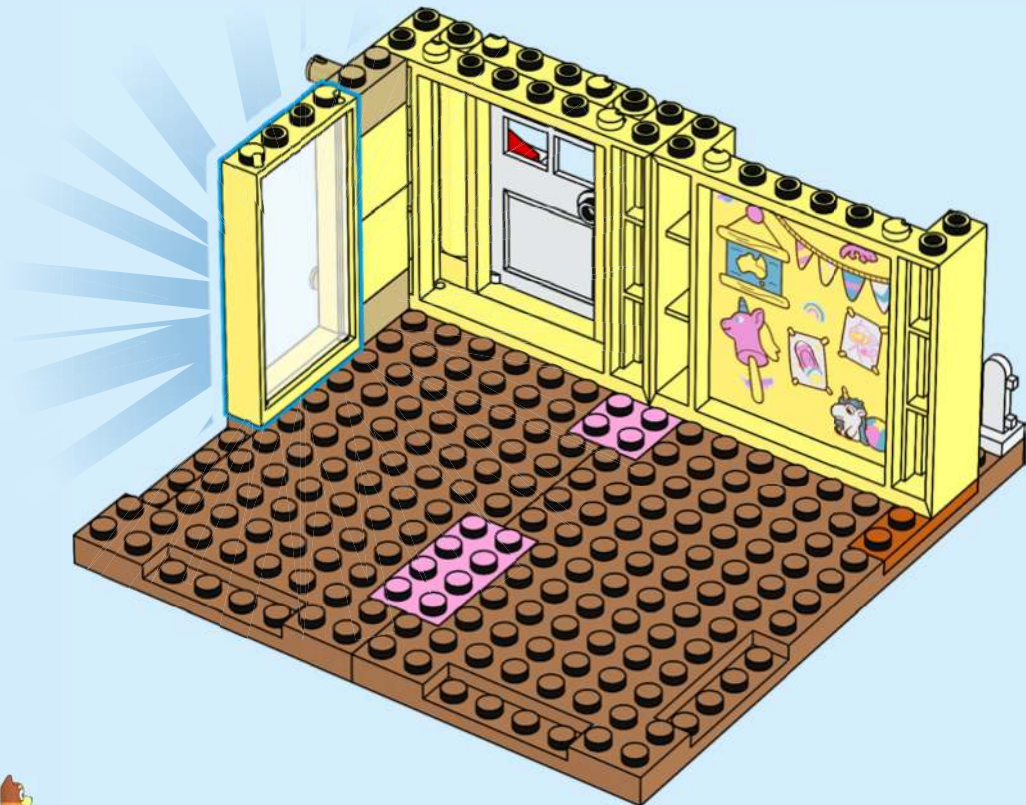


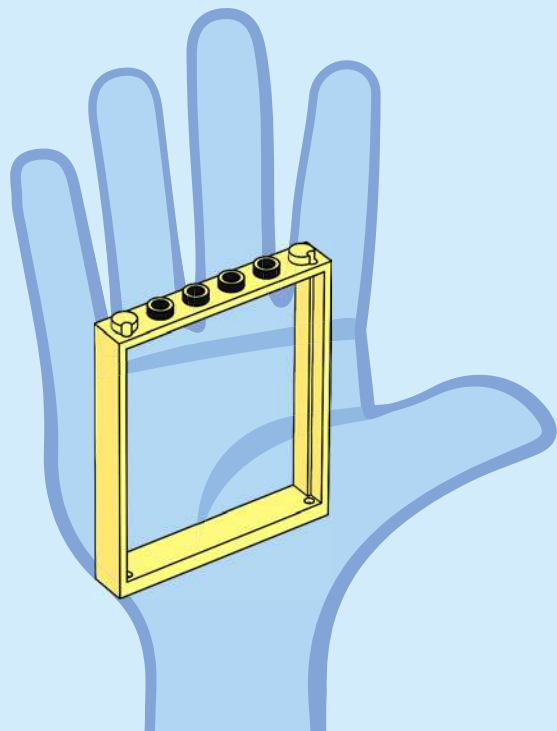
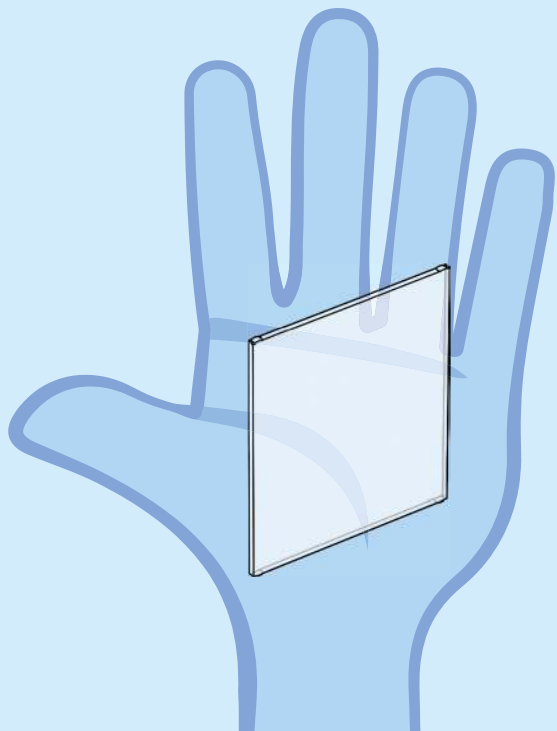


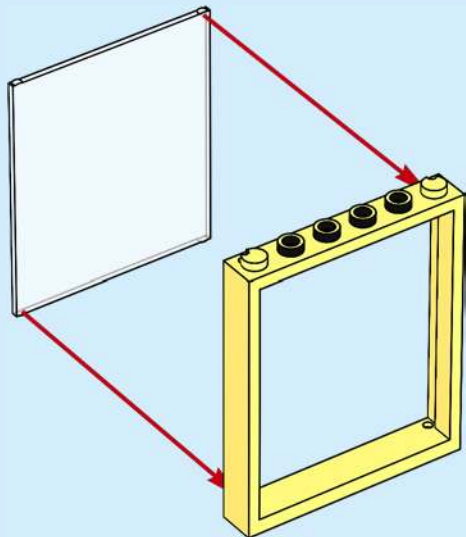


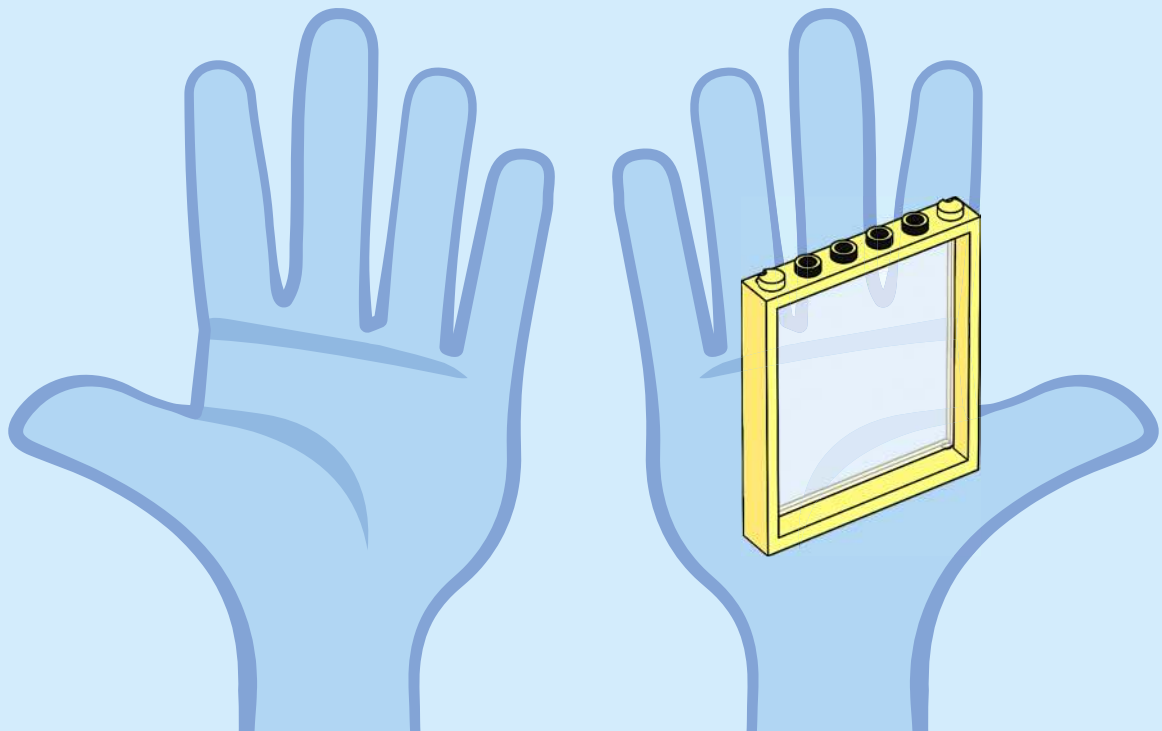


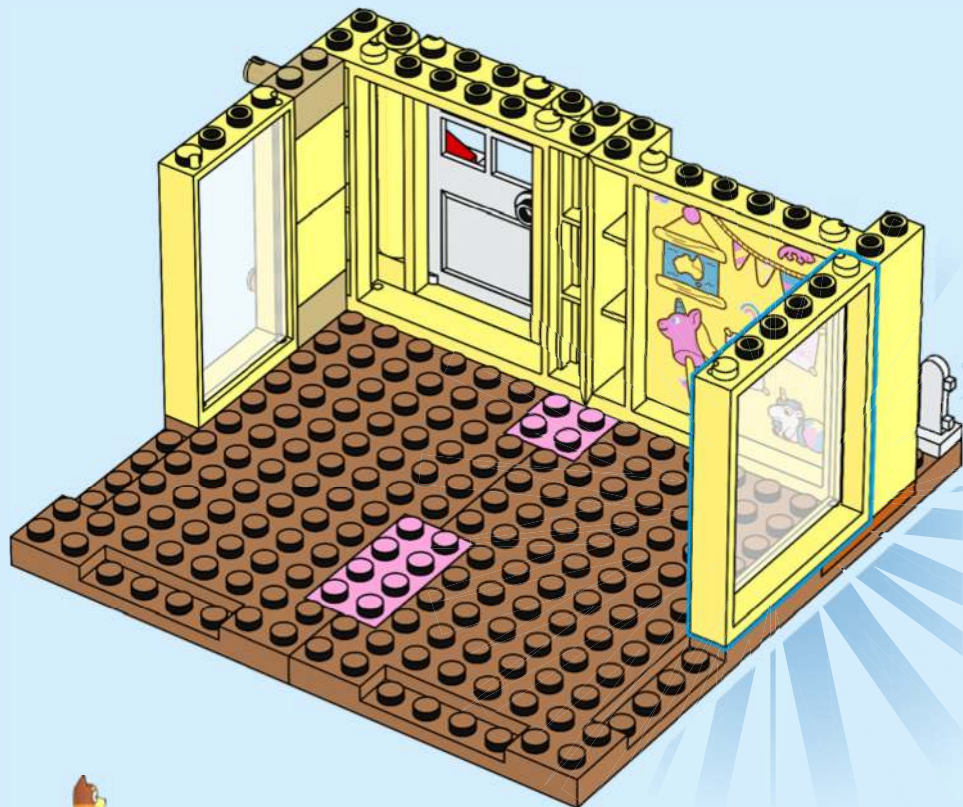


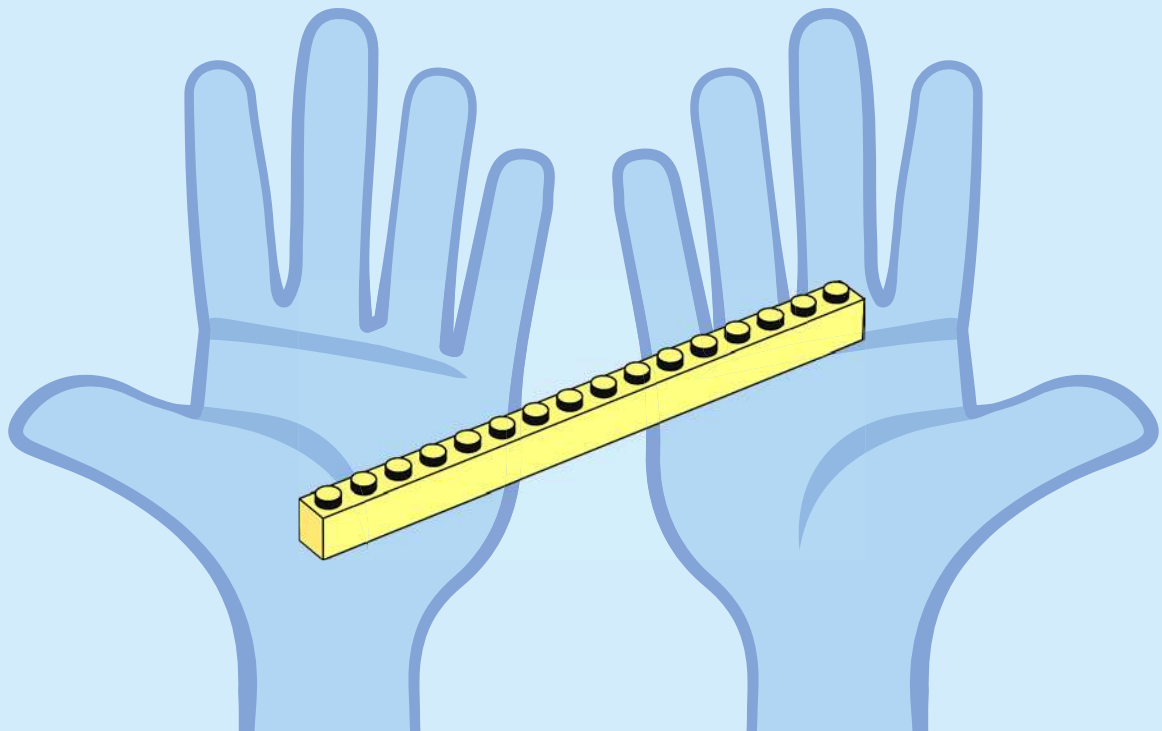


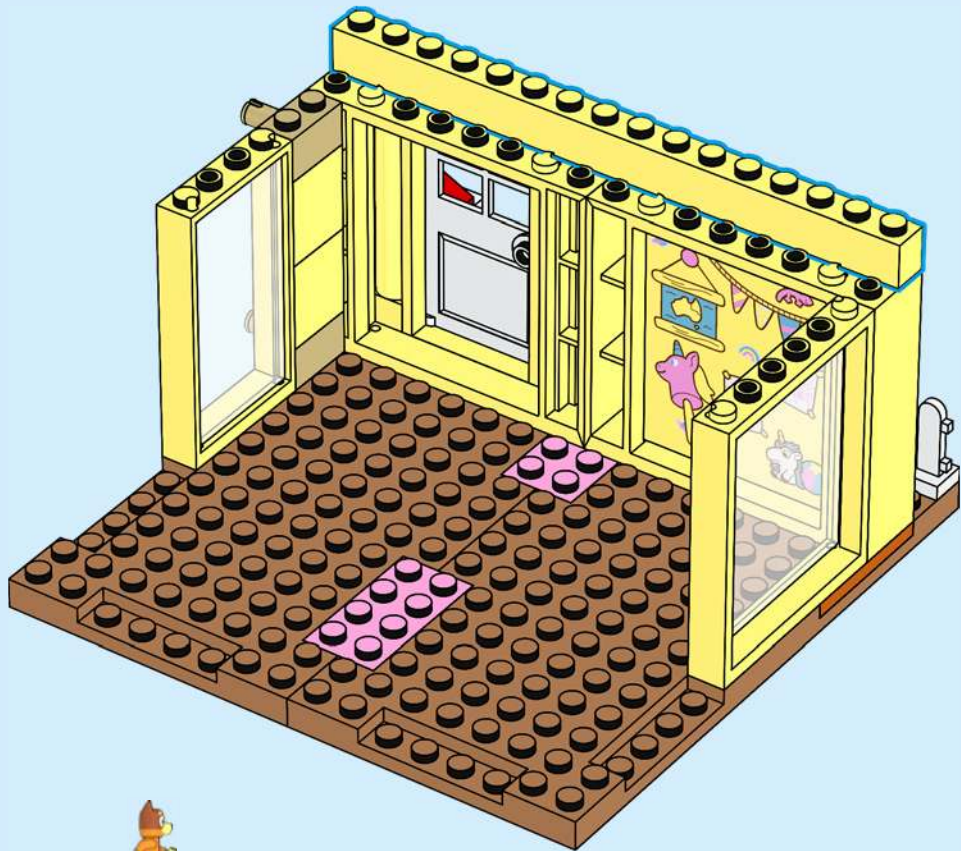


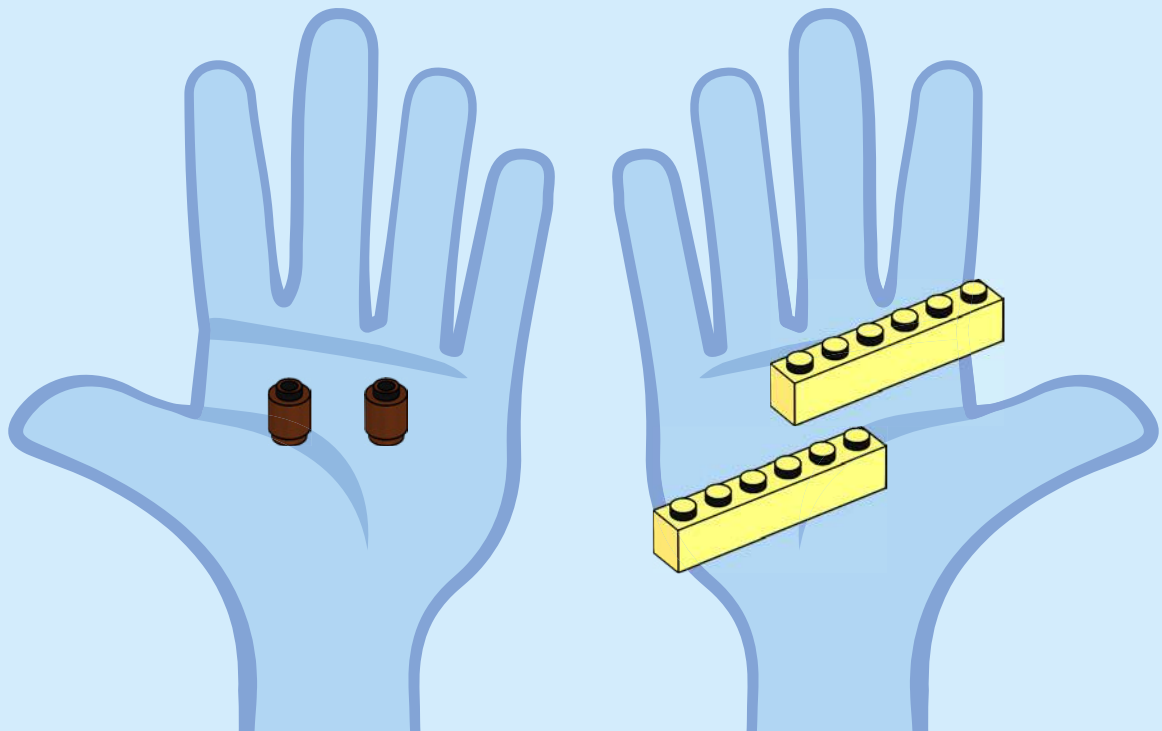


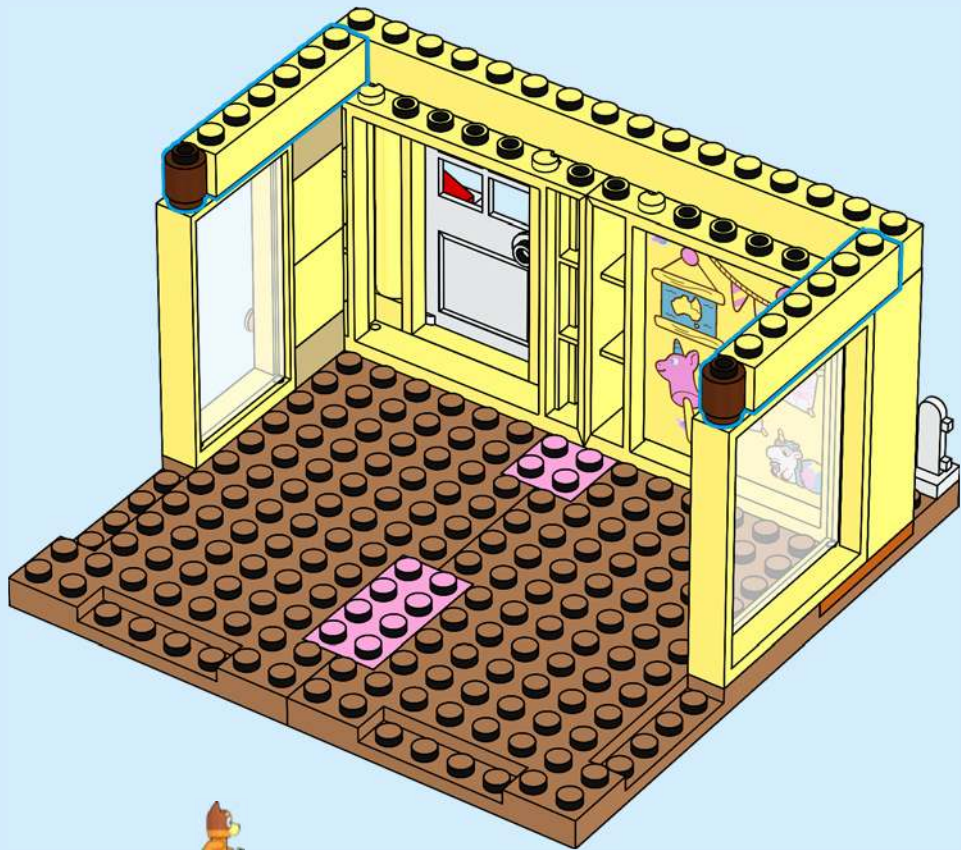


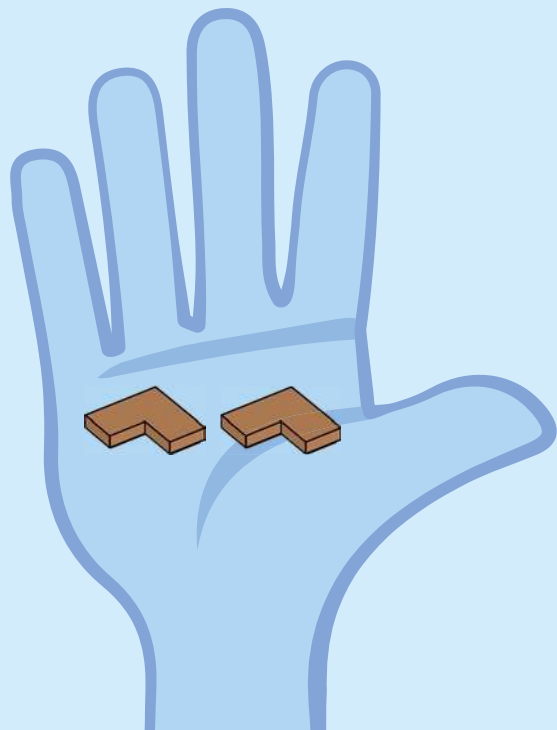
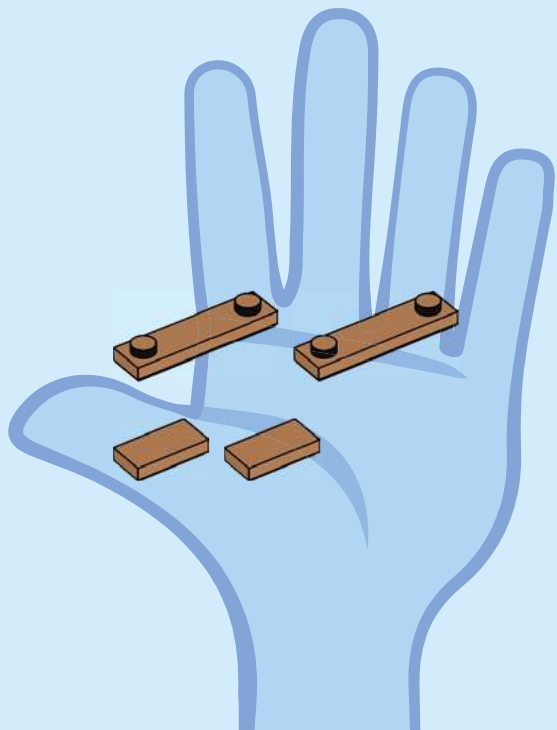


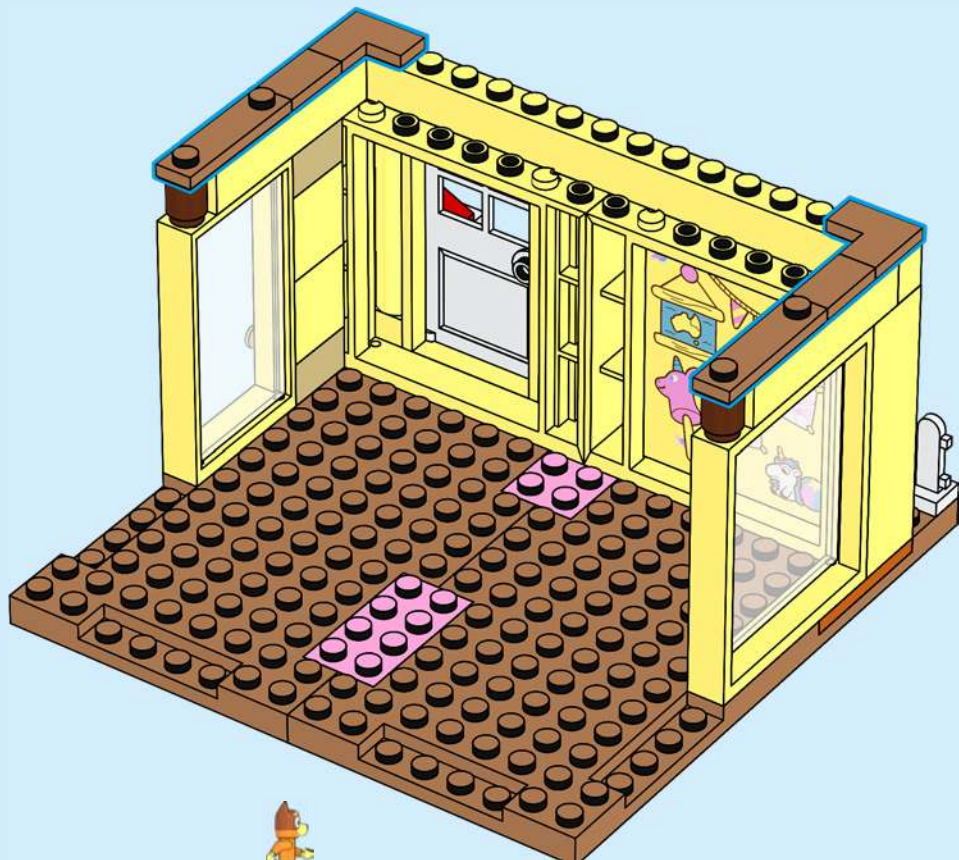


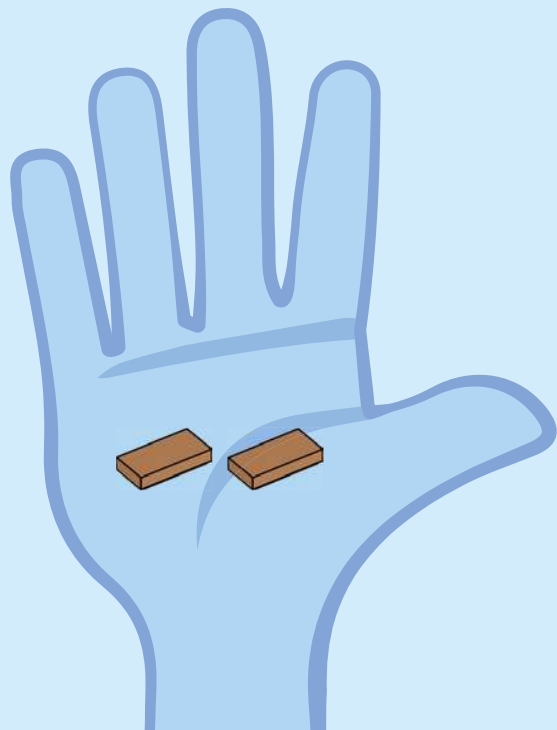
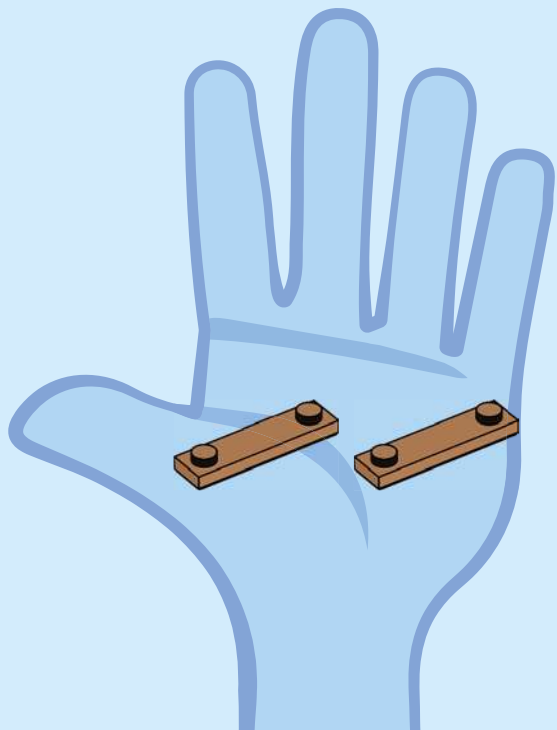


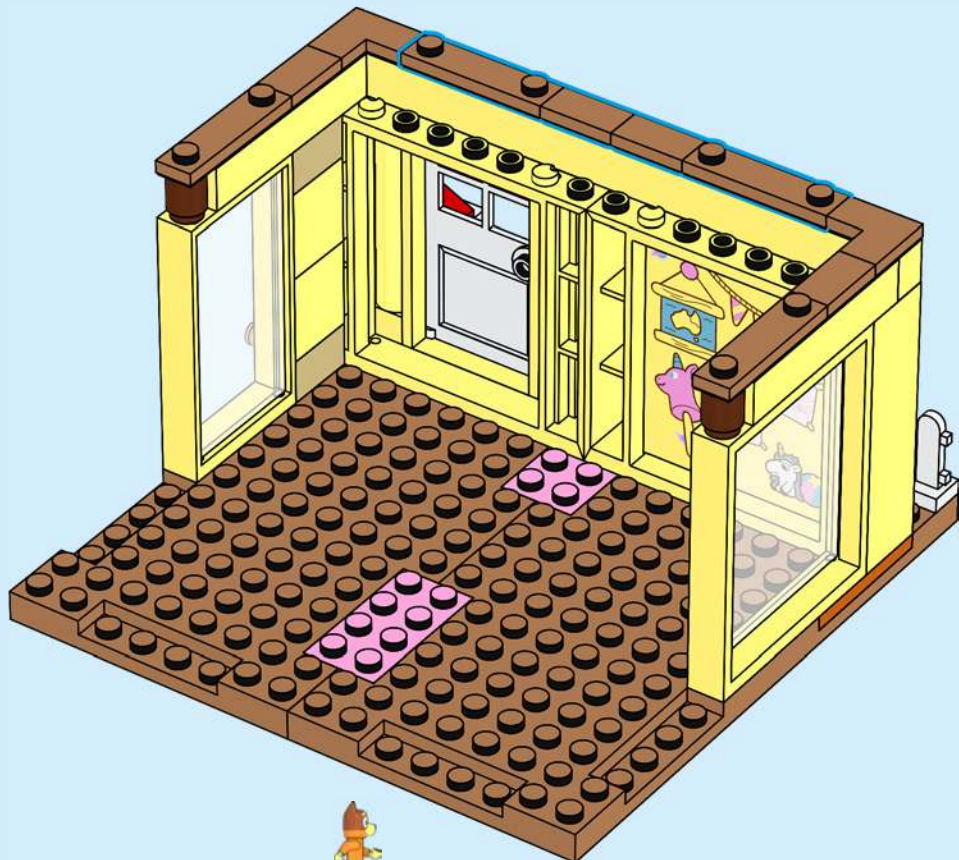


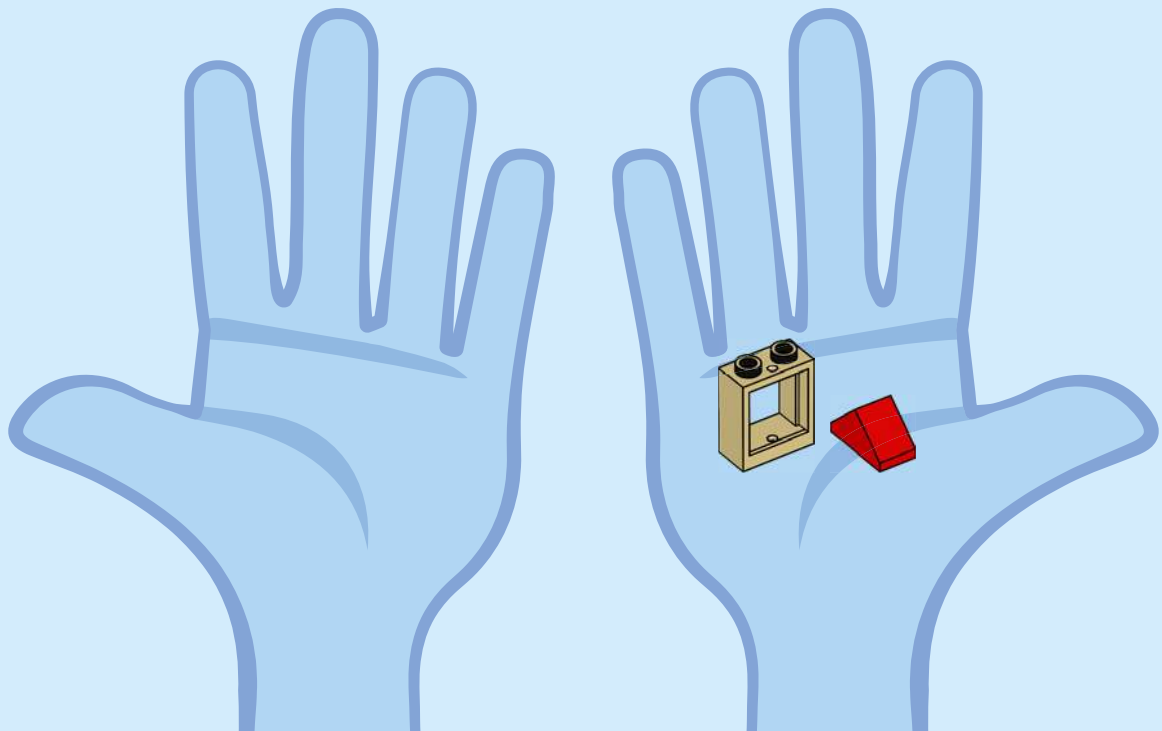


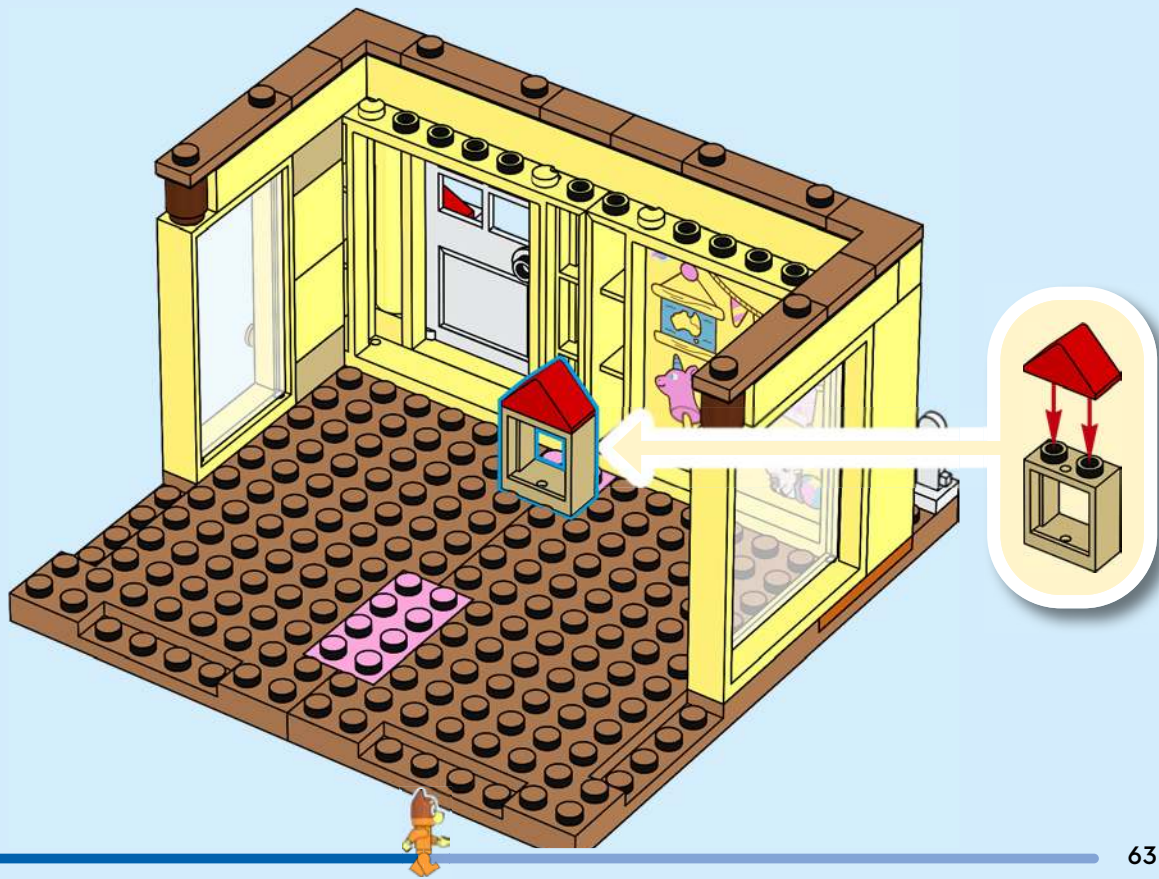


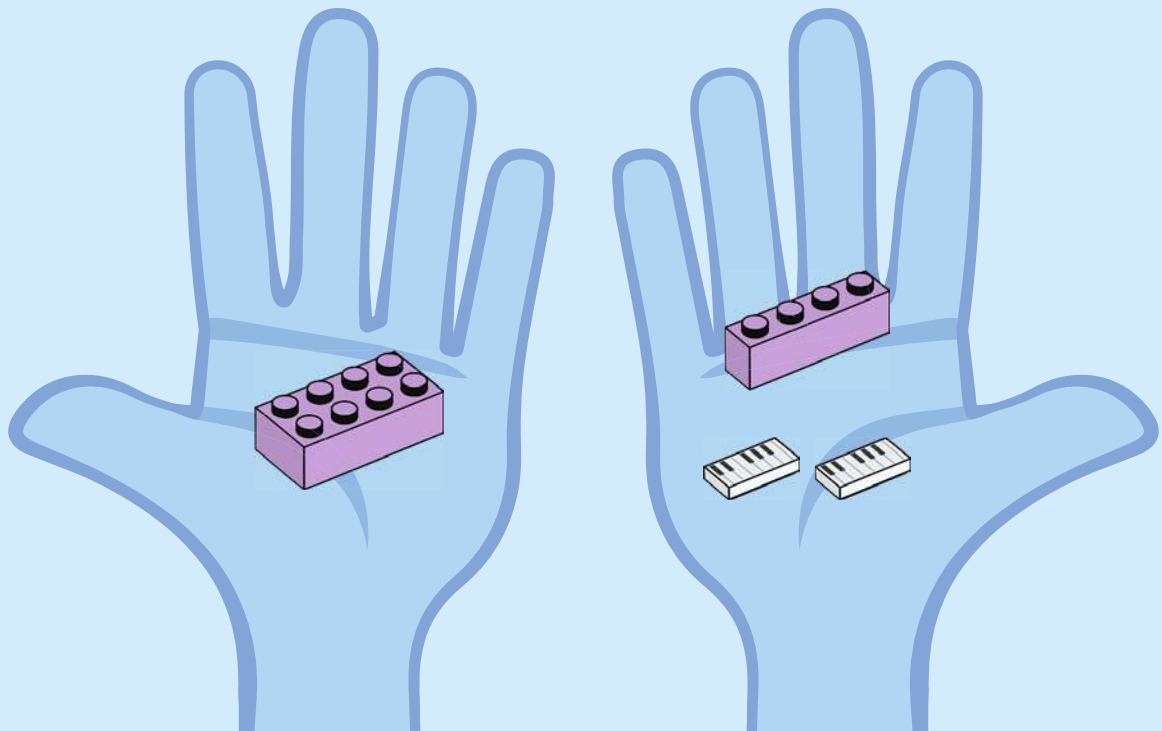


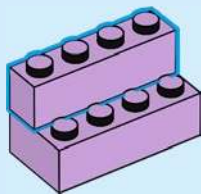
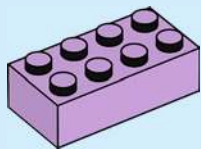


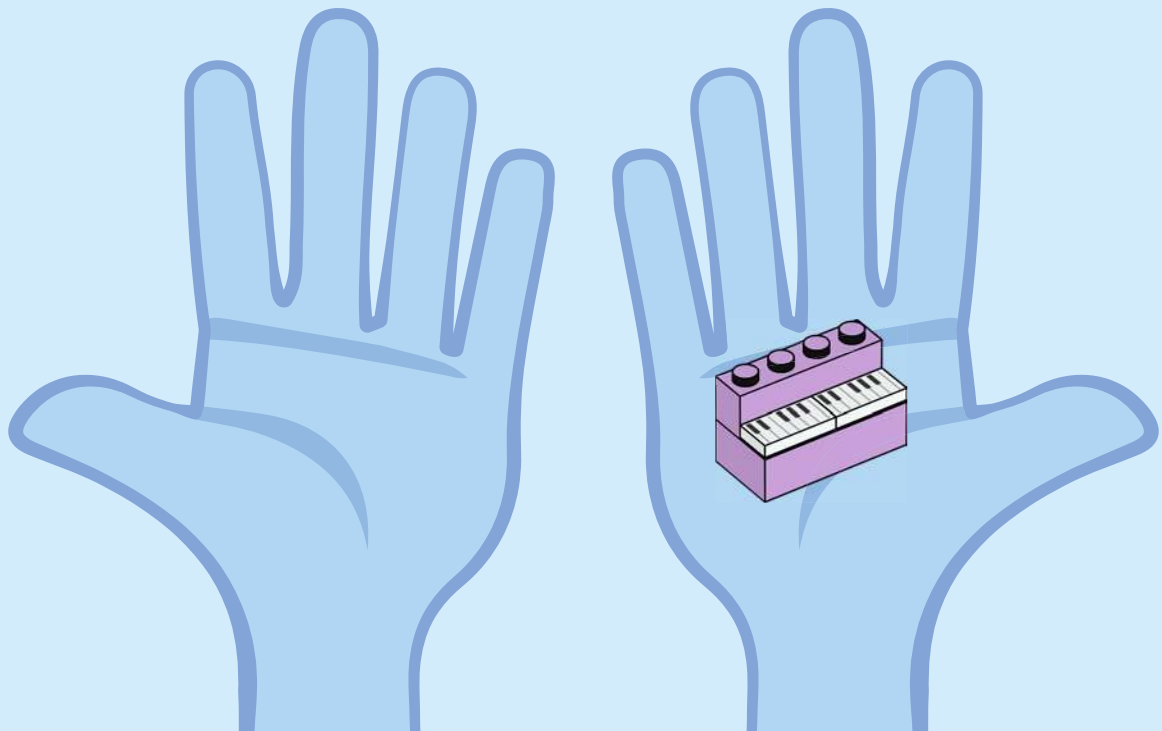


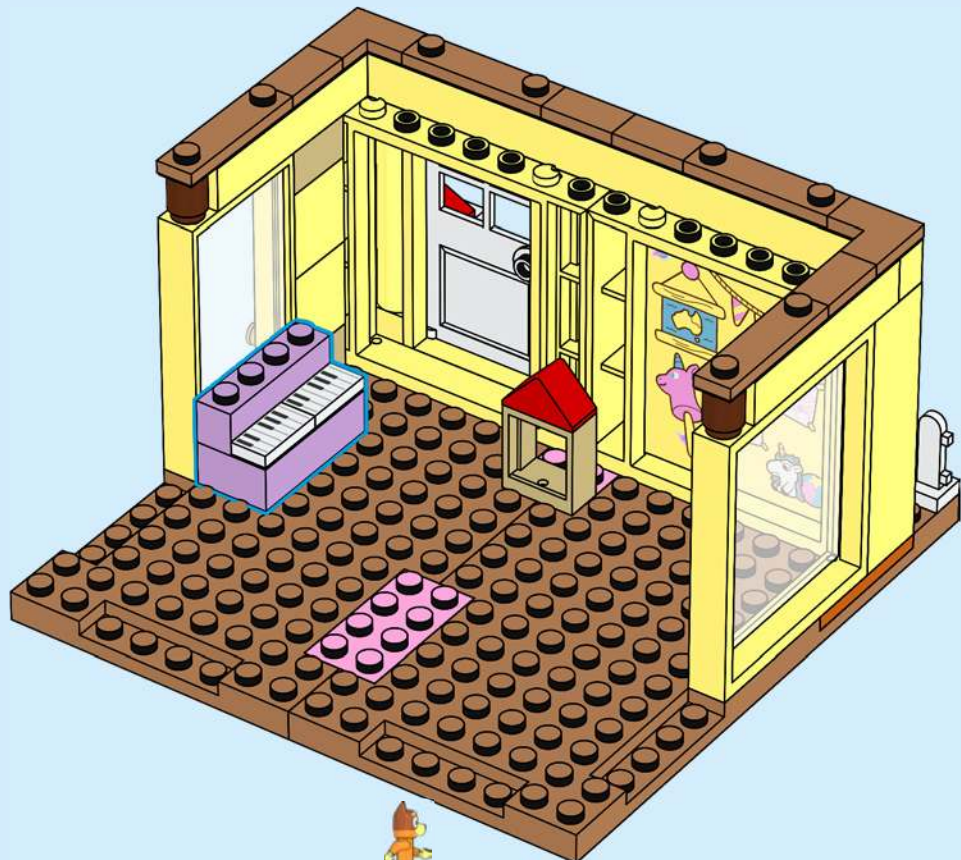


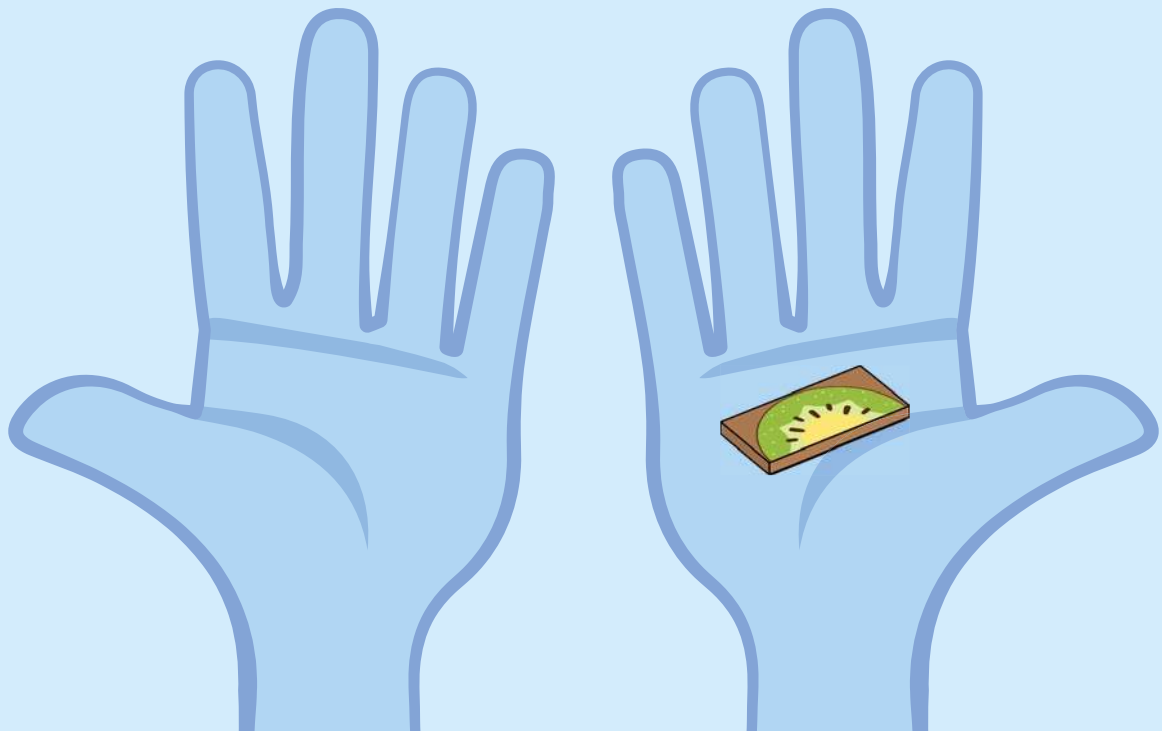




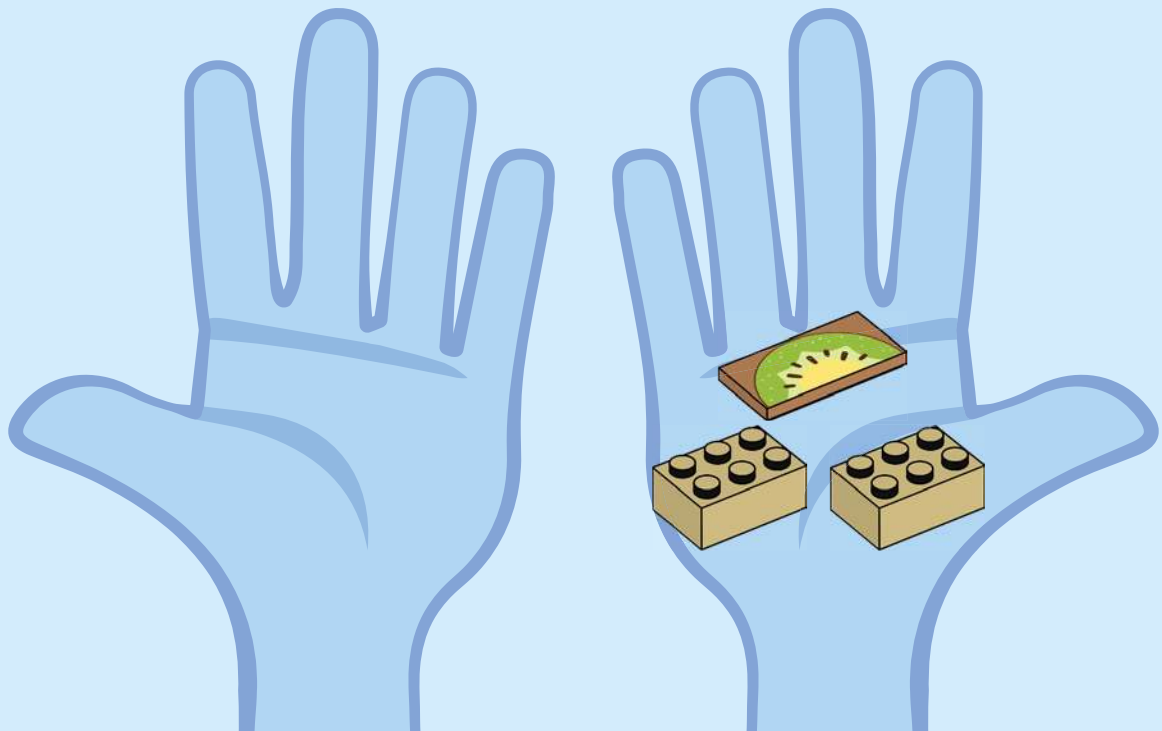


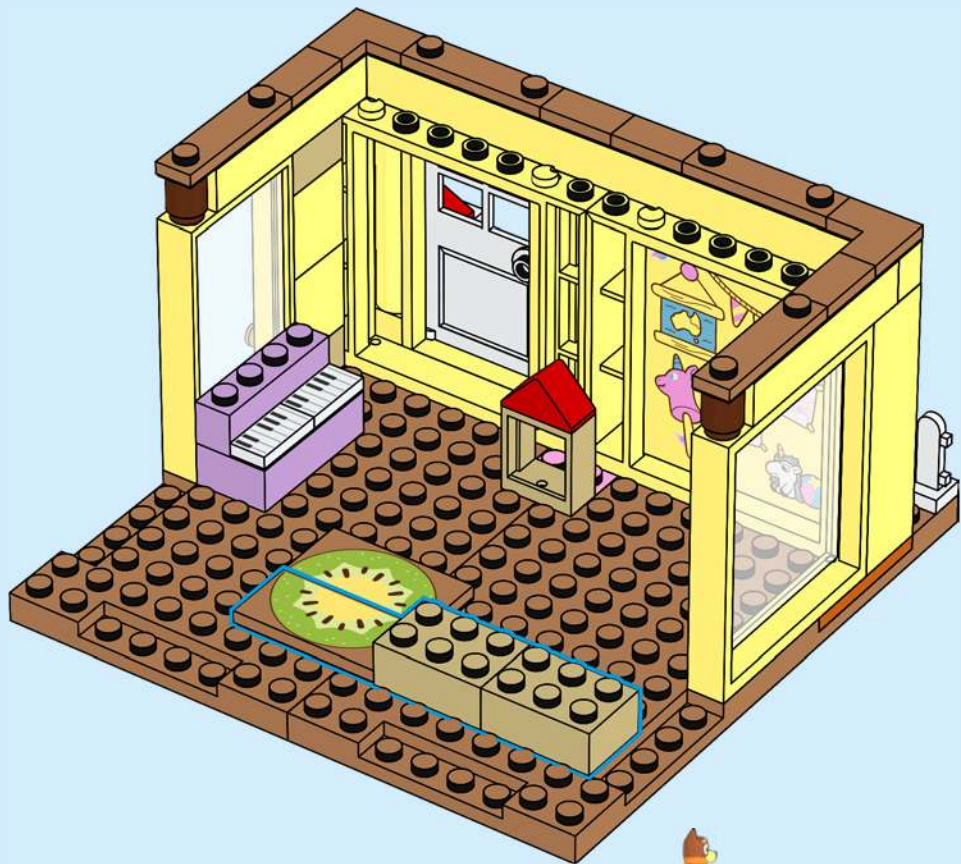


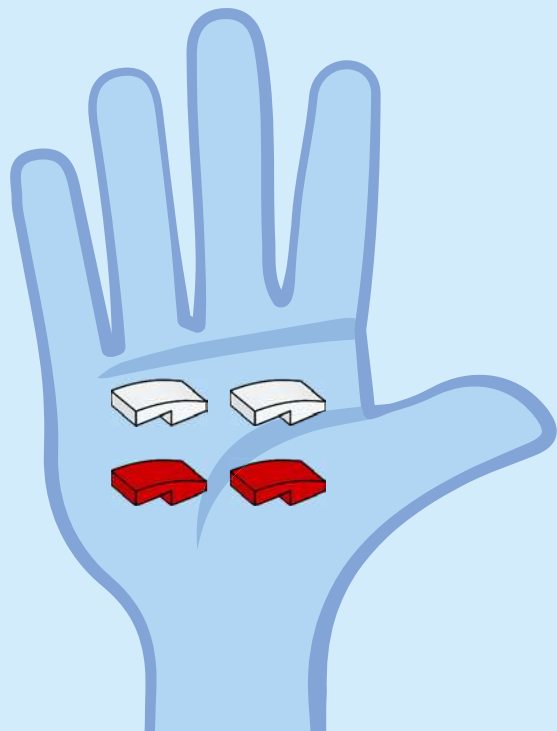
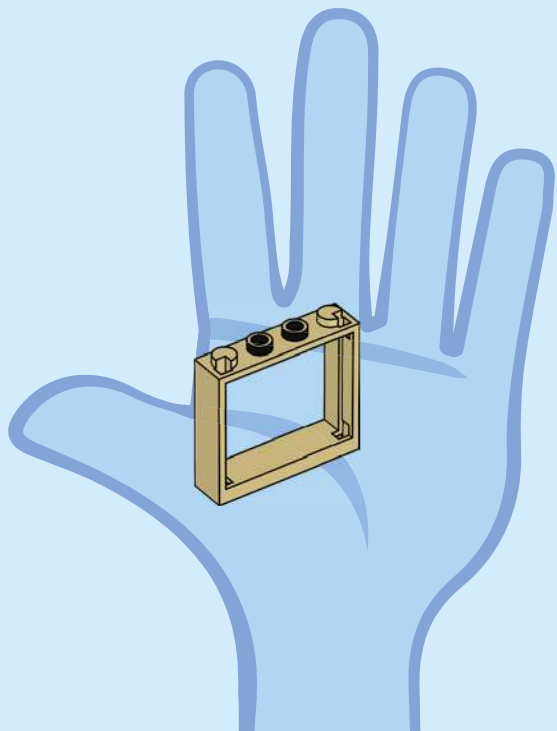


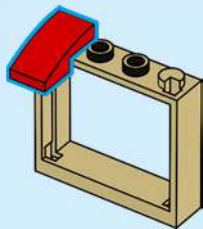
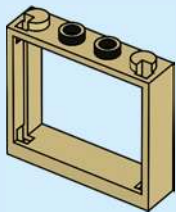


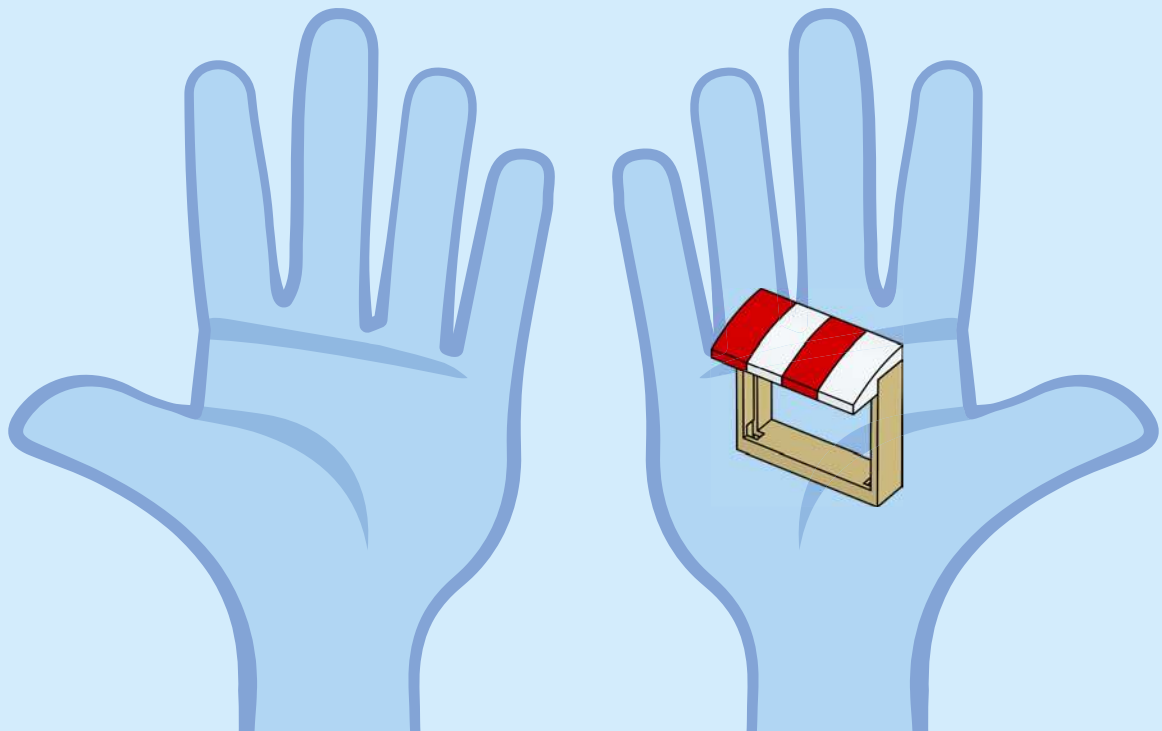




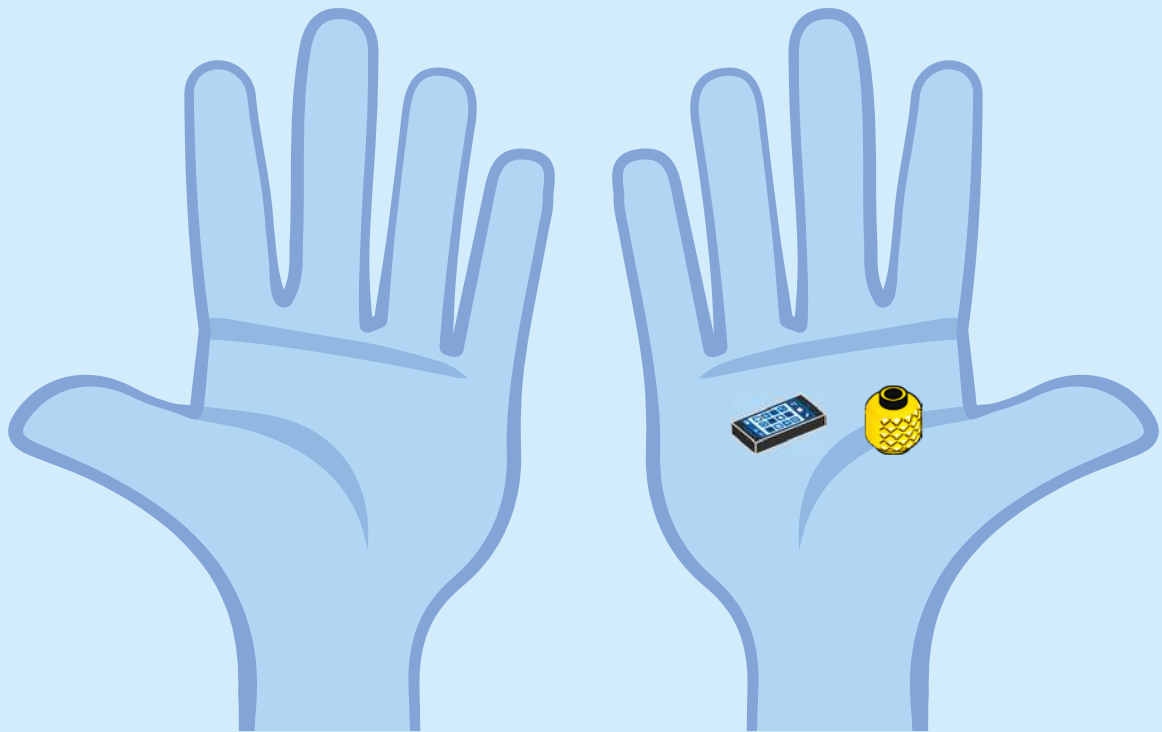




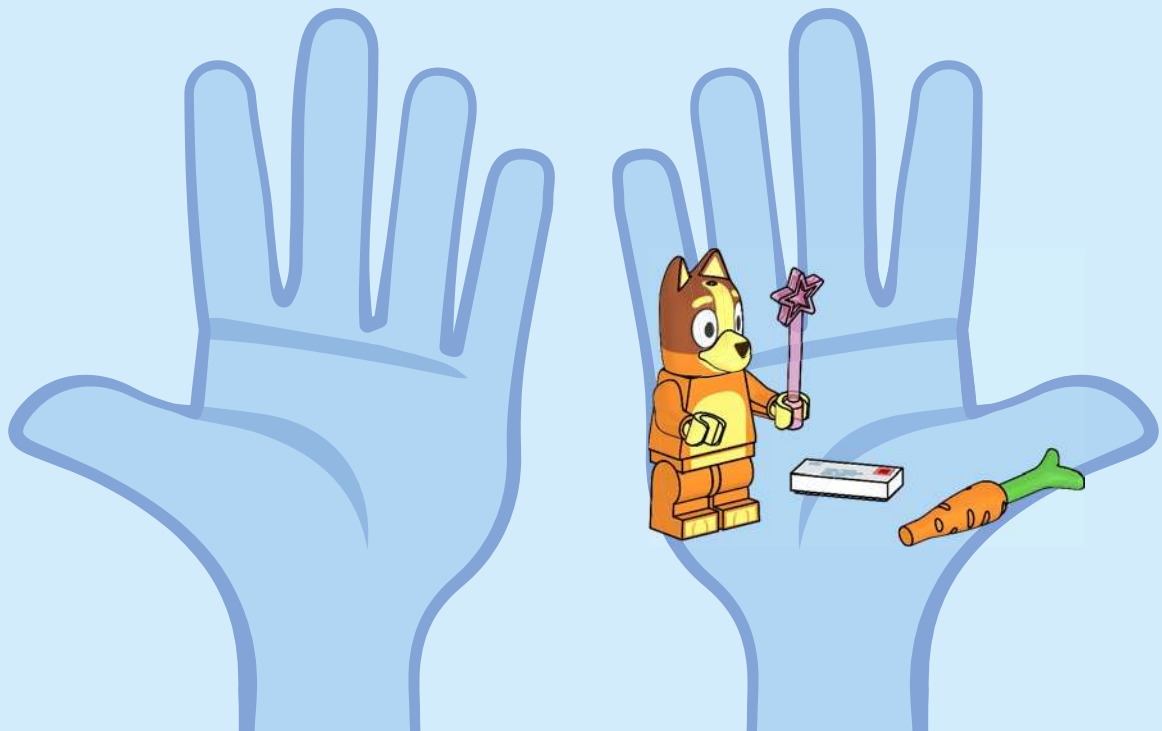




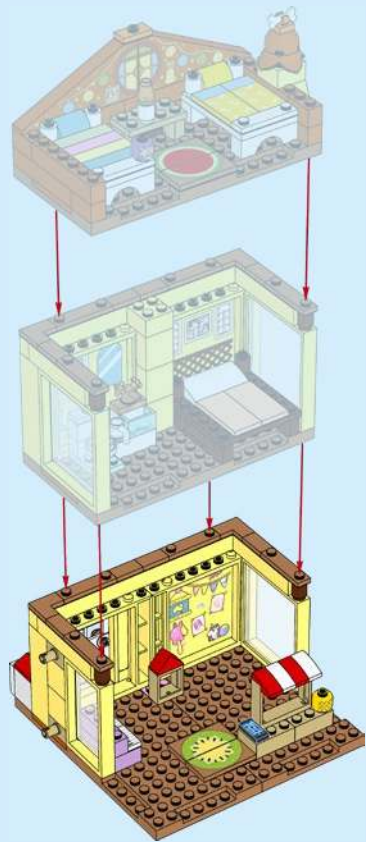




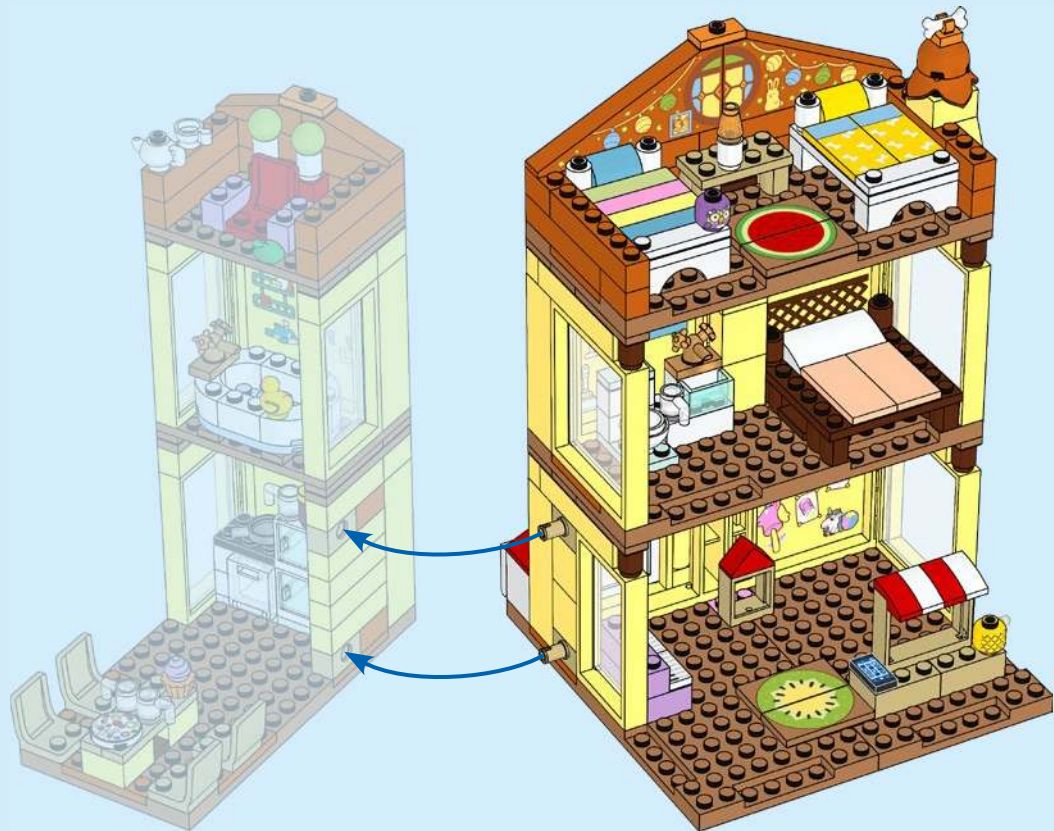
















LEGO and the LEGO logo are trademarks of the LEGO Group. ©2025 The LEGO Group.

BLUEY (word mark and character logos) are trade marks of Ludo Studio Pty Limited and are used under license. BLUEY logo © Ludo Studio Pty Limited 2018. Licensed by BBC Studios. BBC is a trade mark of the British Broadcasting Corporation and is used under license. BBC logo © BBC 1996



6580247