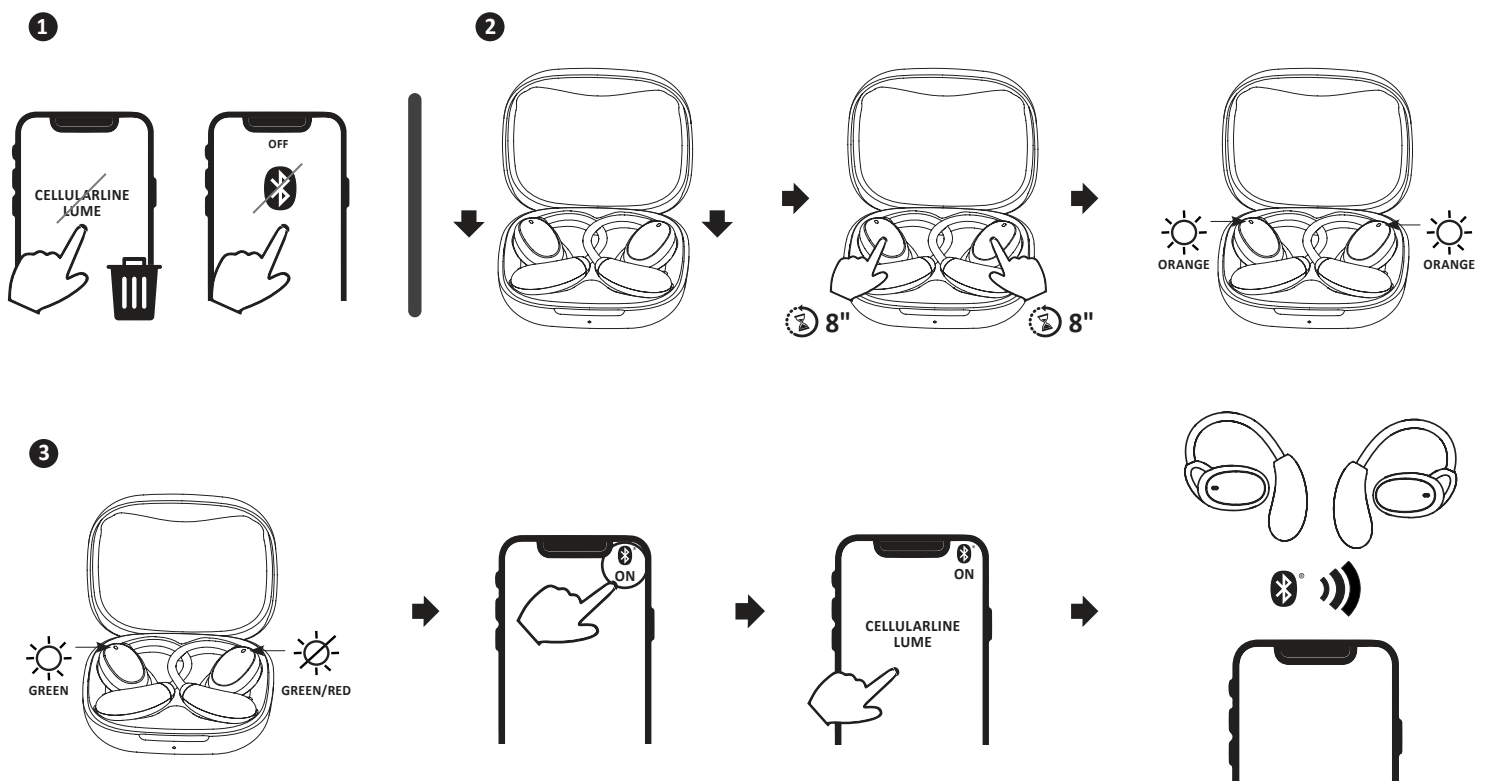
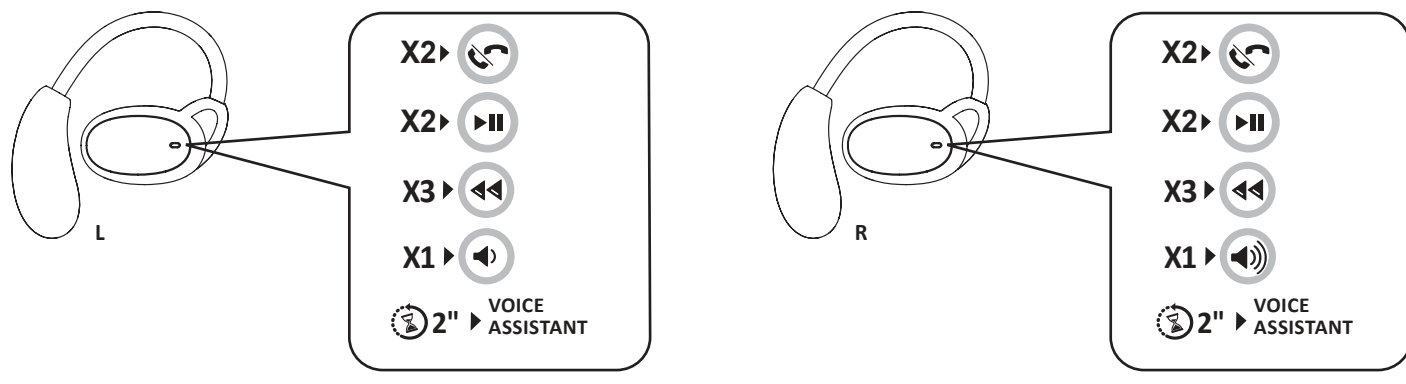
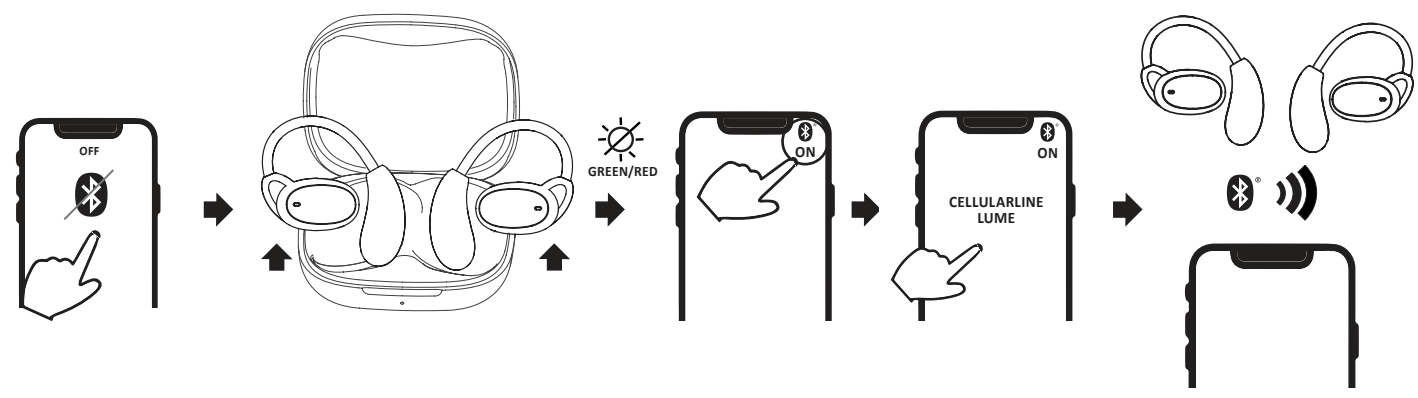
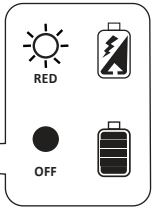
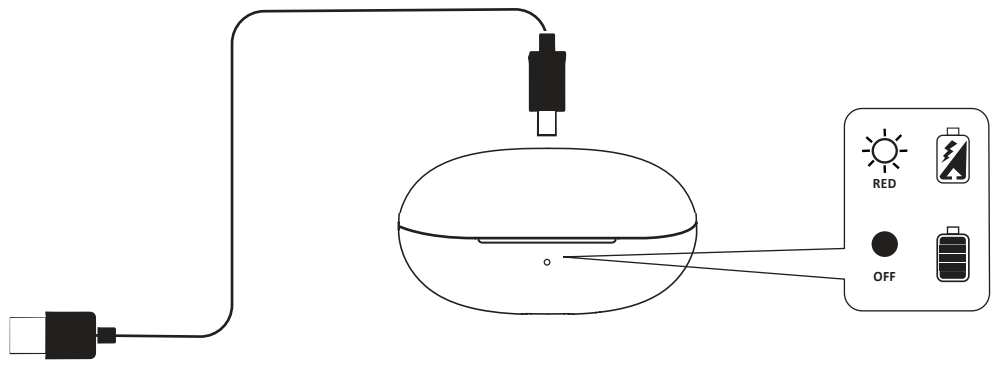
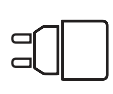
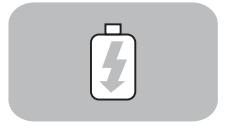
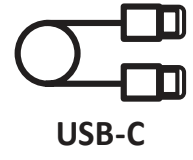
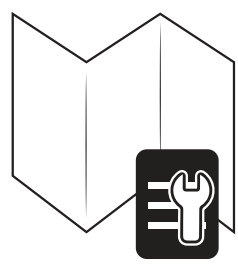
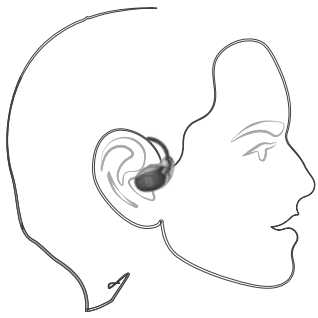


LUME

WIRELESS HEADSET WITH CHARGING CASE



EN - Technical specifications:
 Bluetooth® / version: 5.4
 Supported profiles: HSP - HFP - A2DP - AVRCP
 Range / metres: 10
 Bluetooth® Frequency Range / Mhz: 2402-2480
 Battery Voltage / Volts: 3.7
 Battery capacity / mAh: 50x2
 Charging Case Battery Capacity / mAh: 400
 USB-C port Voltage (V) / Volts: 5
 USB-C port current (A) / Amperes: 0.35
 Maximum EIRP: 3.92db
 Earphone charging / hours/ approx.: 1
 Talk Time / hours/ approx.: 6
 Play Time / hours/ approx.: 8
 Charging Case / hours/ approx.: 1.5
 Weight / grams: 58

IT - Specifiche tecniche:
 Bluetooth® / versione: 5.4
 Profili supportati: HSP - HFP - A2DP - AVRCP
 Portata / metri: 10
 Bluetooth® Frequency Range / Mhz: 2402-2480
 Battery Voltage / Volt: 3.7
 Battery Capacity / mAh: 50x2
 Charging Case Battery Capacity / mAh: 400
 USB-C port Voltage (V) / Volt: 5
 USB-C port current (A) / Ampere: 0.35
 Maximum EIRP: 3.92db
 Ricarica auricolari / ore-circa: 1
 Talk Time / ore-circa: 6
 Play Time / ore-circa: 8
 Ricarica Charging Case / ore-circa: 1.5
 Peso / grammi: 58

FR - Caractéristiques techniques:
 Bluetooth® / version: 5.4
 Profils supportés: HSP - HFP - A2DP - AVRCP
 Portée / mètres: 10
 Bluetooth® Gamme de fréquences / Mhz: 2402-2480
 Tension de la batterie / Volt: 3.7
 Capacité de la batterie / mAh: 50x2
 Capacité de la batterie du Charging Case / mAh: 400
 Tension du port USB-C (V) / Volt: 5
 Courant du port USB-C (A) / Ampère: 0.35
 PIRE max: 3.92db
 Recharge des écouteurs / heures (environ): 1
 Autonomie en conversation / heures (environ): 6
 Autonomie en lecture / heures (environ): 8
 Recharge du Charging Case / heures (environ): 1.5
 Poids / grammes: 58

DE - Technische Daten:
 Bluetooth® / Version: 5.4
 Unterstützte Profile: HSP - HFP - A2DP - AVRCP
 Reichweite / Meter: 10
 Bluetooth®-Frequenzbereich / Mhz: 2402-2480
 Akkuspannung / Volt: 3.7
 Akkukapazität / mAh: 50x2
 Charging Case Akkukapazität / mAh: 400
 USB-C-Anschluss Spannung (V) / Volt: 5
 USB-C-Anschluss Strom (A) / Amper: 0.35
 Maximum EIRP: 3.92db
 Aufladen Headset / Stunden ca.: 1
 Gesprächszeit / Stunden ca.: 6
 Musikwiedergabezeit / Stunden ca.: 8
 Aufladen Charging Case / Stunden ca.: 1.5
 Gewicht / Gramm: 58

ES - Especificaciones técnicas:
 Bluetooth® (versión): 5.4
 Perfiles admitidos: HSP - HFP - A2DP - AVRCP
 Alcance (metros): 10
 Rango de frecuencia Bluetooth® (MHz): 2402-2480
 Voltaje de la batería (volts): 3.7
 Capacidad de la batería (mAh): 50x2
 Capacidad de la batería del Charging Case (mAh): 400
 Voltaje del puerto USB-C (volts): 5
 Corriente del puerto USB-C (amperios): 0.35
 Potencia isotrópica radiada equivalente máxima (dBm): 3.92db
 Recarga de los auriculares (horas aprox.): 1
 Tiempo de conversación (horas aprox.): 6
 Tiempo de reproducción (horas aprox.): 8
 Recarga del Charging Case (horas aprox.): 1.5
 Peso (gramos): 58

TR - Teknik özellikler:
 Bluetooth® / sürümü: 5.4
 Desteklenen profiller: HSP - HFP - A2DP - AVRCP
 Kapsama alanı / metre: 10
 Bluetooth® Frekans Aralığı / Mhz: 2402-2480
 Pili Voltajı / Volt: 3.7
 Pili Kapasitesi / mAh: 50x2
 Charging Case Pili Kapasitesi / mAh: 400
 USB-C port Gerilimi (V) / Volt: 5
 USB-C port akımı (A) / Amper: 0.35
 Maksimum EIRP: 3.92db
 Kulak içi kulaklıkların yeniden şarj edilmesi / saat-yaklaşık: 1
 Konuşma Süresi / saat-yaklaşık: 6
 Çalma Süresi / saat-yaklaşık: 8
 Charging Case Yeniden Şarj Edilmesi / saat-yaklaşık: 1.5
 Ağırlık / gram: 58

NL - Technische kenmerken:
 Bluetooth® / versie: 5.4
 Ondersteunde profielen: HSP - HFP - A2DP - AVRCP
 Bereik / meter: 10
 Bluetooth® Frequentiebereik / Mhz: 2402-2480
 Batterijspanning / Volt: 3.7
 Batterijcapaciteit / mAh: 50x2
 Batterijcapaciteit opladcase / Volt: 400
 Spanning USB-C-poort (V) / Volt: 5
 Stroomsterkte USB-C-poort (A) / Ampère: 0.35
 Maximum EIRP: 3.92db
 Opladtid headset / uur-circa: 1
 Tijdsduur in gesprek / uur-circa: 6
 Afspeeltijd / uur-circa: 8
 Opladtid opladcase / uur-circa: 1.5
 Gewicht / gram: 58

FI - Tekniset tiedot:
 Bluetooth® / versio: 5.4
 Tuettu profiilit: HSP - HFP - A2DP - AVRCP
 Kantavuus / metri: 10
 Bluetooth® taajuusalue / Mhz: 2402-2480
 Akun jännite / Voltti: 3.7
 Akun kapasiteetti / mAh: 50x2
 Charging Case -latauskotelon akun kapasiteetti / mAh: 400
 USB-C -portin jännite (V) / Voltti: 5
 USB-C -portin virta (A) / Ampeeri: 0.35
 Maksimi EIRP: 3.92db
 Kuulokkeiden lataaminen / tuntia-noin: 1
 Puhe aika / tuntia-noin: 6
 Musiikkiunteluaika / tuntia-noin: 8
 Charging Case -latauskotelon lataaminen / tuntia-noin: 1.5
 Paino / grammaa: 58

SV - Tekniska specifikationer:
 Bluetooth® / version: 5.4
 Profiler som stöds: HSP - HFP - A2DP - AVRCP
 Räckvidd / meter: 10
 Bluetooth® frekvensvidd / Mhz: 2402-2480
 Batterispanning / Volt: 3.7
 Batterikapacitet / mAh: 50x2
 Batterikapacitet for Charging Case / mAh: 400
 USB-C-portens spänning (V) / Volt: 5
 USB-C-portens ström (A) / Amper: 0.35
 Maximal EIRP: 3.92db
 Laddning av hörlurar / timmar cirka: 1
 Samtalstid / timmar cirka: 6
 Speltid / timmar cirka: 8
 Laddning av laddningsfodral / timmar cirka: 1.5
 Vikt / gram: 58

DA - Tekniske data:
 Bluetooth® / version: 5.4
 Understøttede profiler: HSP - HFP - A2DP - AVRCP
 Rækkevidde / meter: 10
 Bluetooth® frekvensområde / Mhz: 2402-2480
 Batterispanning / Volt: 3.7
 Batterikapacitet / mAh: 50x2
 Batterikapacitet charging case / mAh: 400
 USB-C-portens spænding (V) / Volt: 5
 USB-C-portens strøm (A) / Amper: 0.35
 Maksimum EIRP: 3.92db
 Opladning af høretelefoner / timer-cirka: 1
 Tale tid / timer-cirka: 6
 Afspilningstid / timer-cirka: 8
 Opladning af Charging Case / timer-cirka: 1.5
 Vægt / gram: 58

